

JADE 3W

Wafer ball valve in stainless steel or carbon steel, of solid and advanced design is backed by the twenty-year experience gained by ENOLGAS in the production of ball valves. In order to keep tolerances and material quality constant, investment casting of body and end adapter was preferred to forging, with careful subsequent toolings on CNC machines, which guarantee a high quality standard. Leading design and accurate machining and finishing of the valves guarantee a perfect tightness and lifetime troubleless working operations.



INDUSTRIAL VALVES

TECHNICAL FEATURES

Triple seal blow out-proof stem.
Two spring washers on top of the stem packing.
Quarter turn stop working also without lever.
Full bore.

JADE

Line is available in stainless steel and carbon steel. ISO mounting holes for actuators.
Fire safe BS 6755, API 6FA, API 607.
General prescription BS 5351.
Connetion with actuator ISO 5211.

END CONNECTIONS

Flanges to UNI 2223-2229
DIN 2501 BL.1
ANSI B16.5.

WORKING PRESSURE

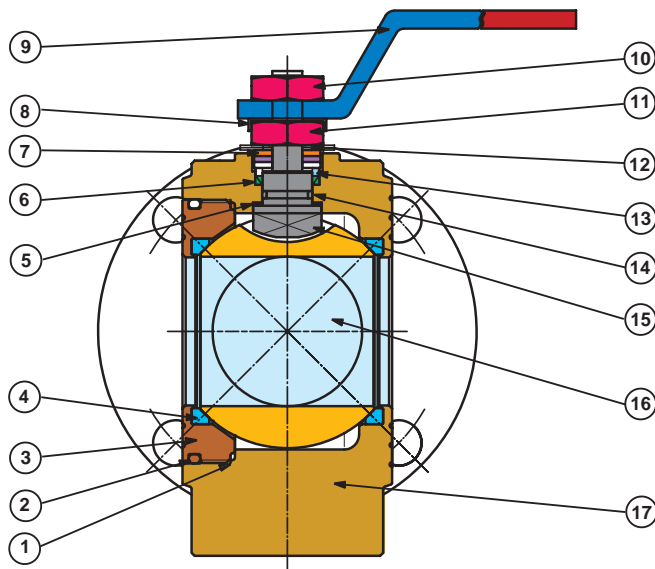
PN 16 on request PN 25 and PN 40

TEMPERATURE LIMITS

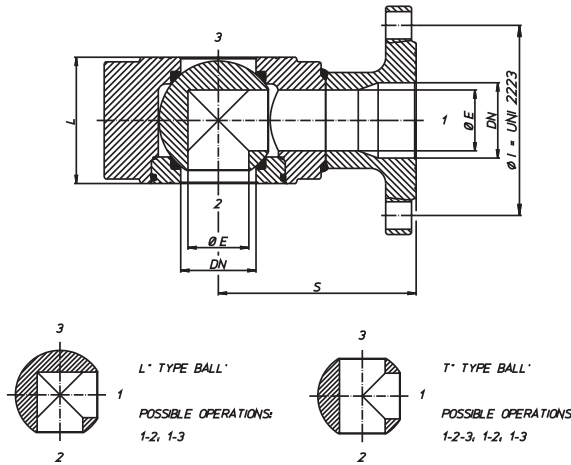
From -20°C to +180°C

UTILISATION

Chemicals, oil derivatives, hydraulics, pneumatics, water, gases and vacuum. For special uses, see the table of chemical resistance.



Item	Description	JADE stainless steel	JADE carbon steel
1	Static gasket	From bar	Virgin P.T.F.E.
2	Static O-Ring	Black	NBR
3	Body insert	From bar	AISI 316 D 1.4401
4	Ball seats	From bar	Virgin P.T.F.E.
5	Thurst washer	From bar	Virgin P.T.F.E.
6	Stem packing	From bar	Virgin P.T.F.E.
7	Operation-stop	Blanked	AISI 304 D 1.4301
8	Fixing-nut-plate	Blanked	AISI 304 D 1.4301
9	Lever handle	P.V.C. insulated red color	AISI 304 D 1.4301
10	Locking nut	Forged	AISI 304 D 1.4301
11	Stem retaining-nut	Forged	AISI 304 D 1.4301
12	Spring washers	Drawn	AISI 301 D 1.4310
13	Packing washers	From bar	AISI 303 D 1.4305
14	O-ring	Green or black	Fluoroelastomer
15	Stem	From bar	AISI 316 D 1.4401
16	Ball	Forged	AISI 316 D 1.4401
			DN 15/40 AISI 316 D 1.4401
			DN 50/100 AISI 304 D 1.4301
17	Body	Investment casting/From bar	AISI 316 D 1.4408/D 1.4401



- 15% GLASS-FILLED PTFE with temperature limits -20°C + 195°C
- PTFE+CARBOGRAPHITE with temperature limits -20°C + 210°C
- DN 65 and DN 100 PN 25/40: metric flange drilling
- Reduction gear with manual operation
- Antistatic device from DN 15 to DN 32
- On request the valve is available with ATEX certificate
- For further special requests please consult our technical/commercial service

AVAILABLE ACCESSORIES

Extended stem for insulated pipes.

Size	Ø E	Ø I	L mm	S mm
DN15	10	65	35	85
DN20	15	75	38	90
DN25	20	85	43	90
DN32	25	100	54	105
DN40	32	110	66	120
DN50	40	125	83	130
DN65	50	145	103	150
DN80	65	160	122	175
DN100	78	180	153	185

For all other dimensions, please refer to Jade series.

Breaking Torque in Nm

DN size	15	20	25	32	40	50	65	80	100	
PN - bar	0	4	7	10	16	25	35	55	75	150
	16	4,8	8,5	11,3	19	28	39	59	84,5	168
	25	5,2	9,1	12	20,5	29,5	41,5	62,5	92	180
	40	6	10,5	13	22,5	31,5	44	67	99	195

Values in Nm can change depending on the material used for seats, on temperature and on the fluid used. For a safe working of the various sorts of servocontrol, it is necessary to consider a

safety factor = 1,5 in each condition. While the valve is working, with frequent on/off cycles, the operating torque can become extremely low in comparison with the beginning one.

PRESSURE/TEMPERATURE DIAGRAM

