

CORAL

Ball valve in stainless steel, of solid and advanced design is backed by the twenty-year experience gained by ENOLGAS in production of ball valves.

In order to keep tolerances and material quality constant, investment casting of body and end adapter was preferred to forging, with careful subsequent toolings on CNC machines, which guarantee a high quality standard.

Leading design and accurate machining and finishing of the valves guarantee a perfect tightness and lifetime troubleless working operations.



INDUSTRIAL VALVES

TECHNICAL FEATURES

Full bore.

The machining of body and end connection takes place on CNC high precision machines so as to guarantee the compliance with the design specifications.

Possibility of stops at 90° by operation without lever.

Blow-out proof stem with labyrinth sealing system.

Equipped with wrapping seats ensuring long life cycles. Perfect air bubble-free sealing.

Maintenance free.

Fire safe to BS 6755, API 6FA, API 607.

General prescriptions BS 5351.

END CONNECTIONS

Female screwed to ISO 7/1 Rp = DIN 2999
NPT

ANSI B 1.20.1.

Socket-weld ends to SW ANSI B16.11

Butt-weld ends to BW ANSI B16.25 schedule 40.

WORKING PRESSURE

PN 105 series 1500
PN 64 series 800

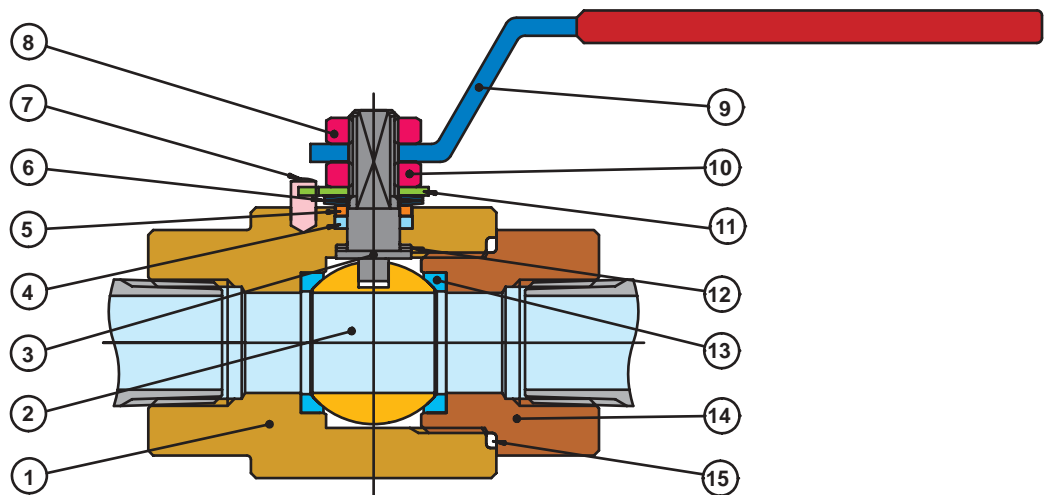
TEMPERATURE LIMITS

From -20°C to +150°C

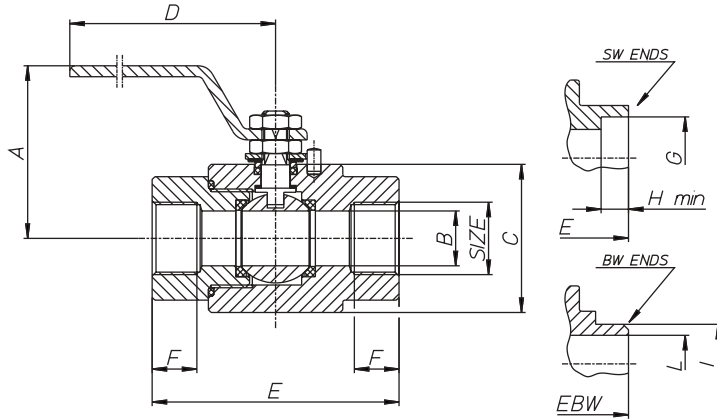
UTILISATION

CORAL is suitable for use in high pressure and high temperature condition.

For special uses, see the table of chemical resistance.



Item	Description	CORAL stainless steel		CORAL carbon steel		
1	Body	From bar	AISI 316	D 1.4401	A 105	D 1.4301
2	Ball	Forged	AISI 316	D 1.4401	AISI 304	
3	Stem	From bar	AISI 316	D 1.4401	AISI 304/F6	
4	Upper stem packing	From bar	Virgin P.T.F.E.		Virgin P.T.F.E.	
5	Packing gland	From bar	AISI 304	D 1.4301	A 105	
6	Spring washers	Drawn	AISI 301	D 1.4310	50 CrV4	
7	Stop pin	From bar	AISI 304	D 1.4301	A 105	
8	Locking nut	Forged	AISI 304	D 1.4301	A 105 Nickel-plated	
9	Lever handle	P.V.C. insulated red color	A 105 Nickel-plated		A 105 Nickel-plated	
10	Stem retaining nut	Forged	AISI 304	D 1.4301	A 105 Nickel-plated	
11	Operation stop	Blanked	A 105 Nickel-plated		A 105 Nickel-plated	
12	Thrust washer	From bar	Virgin P.T.F.E.		Virgin P.T.F.E.	
13	Ball seats	From bar	Virgin P.T.F.E.		Virgin P.T.F.E.	
14	End connection	From bar	AISI 316	D 1.4401	A 105	
15	Static gasket	From bar	Virgin P.T.F.E.		Virgin P.T.F.E.	



- Integral weld-on extension nipples SW or BW up to 2"
- FEMALE CONNECTIONS: NPT ANSI B1.20.1
- Degreased version
- PN 210 (Delrin)
- For further special requests please consult our technical/commercial service

Size	A mm	B mm	C mm	D mm	E mm	EBW mm	F mm	G mm	H mm	I mm	Q mm	weight gr.GAS	weight gr.SW	weight gr.BW
1/4"	72	10	42	148	67	95	11	14,3	9,53	13,7	9,3	610	610	630
3/8"	72	10	42	148	67	95	11,4	17,8	9,53	17,5	12,5	615	615	650
1/2"	75	15	50	148	75	105	15	22	9,53	21,3	16	930	930	1050
3/4"	85	20	60	180	90	125	16,3	27,3	12,7	26,7	21	1550	1550	1600
1"	95	25	68	180	105	140	19,1	34	12,7	33,4	27	2265	2265	2350
1 1/4"	100	30	81	240	120	160	21,4	42,8	12,7	43	35	3300	3300	3400
1 1/2"	105	38	94	240	135	180	21,4	48,9	12,7	48,3	41	4850	4850	5400
2"	115	48	105	280	155	220	25,7	61,4	115,88	60,3	53	6490	6490	6800
3"	145	73	150	380	205	280	33,3	90	15,878	88,9	78	17000	17000	17500
4"	200	94	185	470	230	330	39,3	115,7	19,1	114,3	103	24000	24000	24500

Breaking Torque in Nm

DN size	10	15	20	25	32	40	50	80	100
	1/4-3/8"	1/2"	3/4"	1"	1 1/4"	1 1/2"	2"	3"	4"
0	10	12	16	21	54	65	86	183	270
64	15	18,6	23	27	80	83,6	126,6	240	350
105	17	22,6	25,2	29,6	88	92,9	131	260	389
160	19,5	24,7	26,6	31,3					
210	23,4	27,6	30	34,8					

Values in Nm can change depending on the material used for seats, on temperature and on the fluid used. For a safe working of the various sorts of servocontrol, it is necessary to consider a

safety factor = 1,5 in each condition. While the valve is working, with frequent on/off cycles, the operating torque can become extremely low in comparison with the beginning one.

