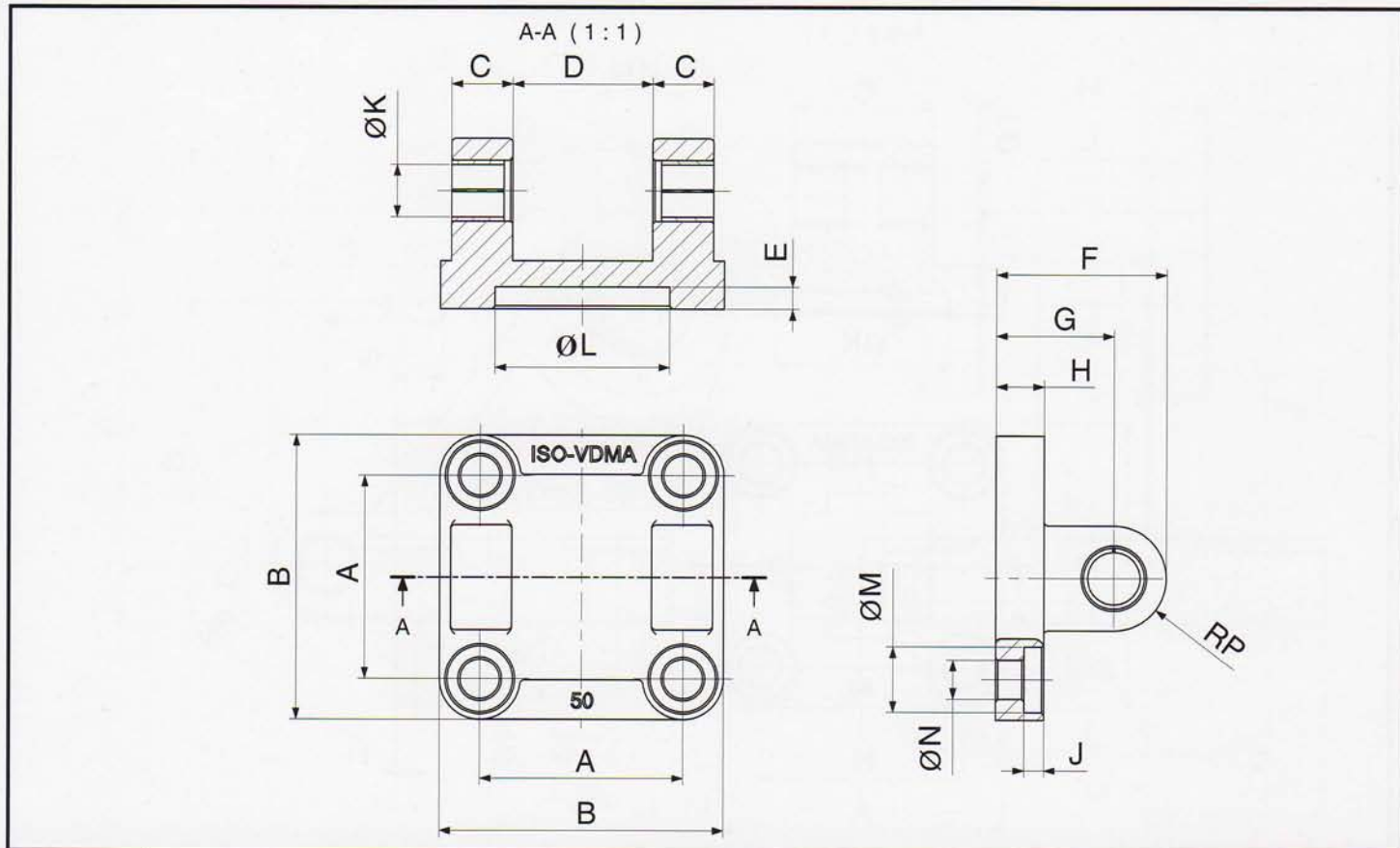


EDIZIONE 2006
2006 EDITION



Accessories Line by Cy.Pag.



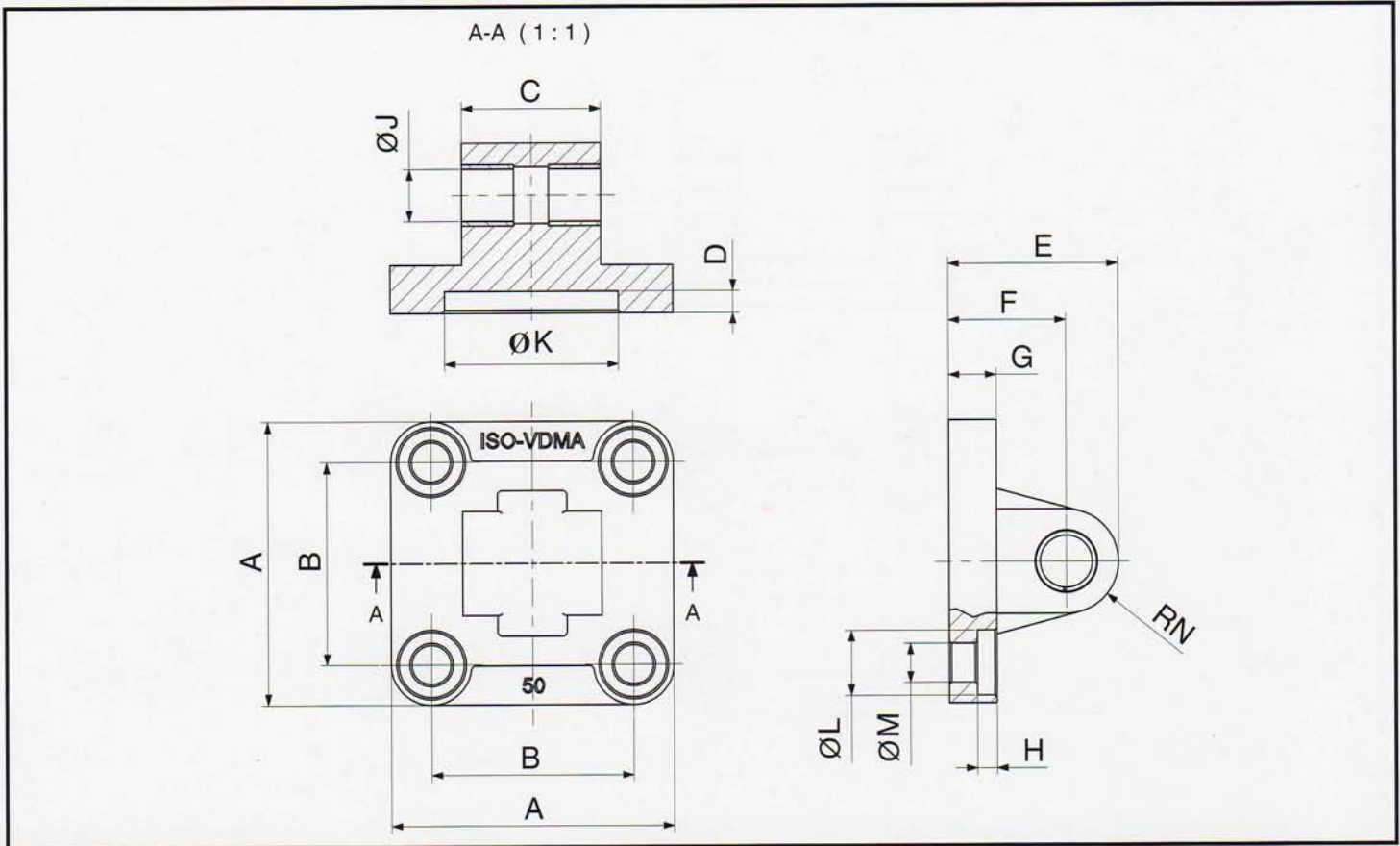
COD.	
Con viti / With screws	Senza viti / Without screws

Ø	A	B	C	D	E	F	G	H	J	ØK	ØL	ØM	ØN	RP	Con viti / With screws		Senza viti / Without screws	
															Std.	Inox	Std.	Inox
32	32,5	45	9,5	26	5	32	22	9	3,5	10	30	11	6,6	10	CERF32X	CERF32XI	CERF32XWS	CERF32XWSI
40	38	52	12	28	5	37	25	9	3,5	12	35	11	6,6	12	CERF40X	CERF40XI	CERF40XWS	CERF40XWSI
50	46,5	65	14	32	5	39	27	11	4,5	12	40	15	9	12	CERF50X	CERF50XI	CERF50XWS	CERF50XWSI
63	56,5	75	15	40	5	48	32	11	4,5	16	45	15	9	16	CERF63X	CERF63XI	CERF63XWS	CERF63XWSI
80	72	95	20	50	5	52	36	14	4	16	45	18	11	16	CERF80X	CERF80XI	CERF80XWS	CERF80XWSI
100	89	115	25	60	5	61	41	14	4	20	55	18	11	20	CERF100X	CERF100XI	CERF100XWS	CERF100XWSI
125	110	140	30	70	7	75	50	20	10	25	60	20	14	25	CERF125X	CERF125XI	CERF125XWS	CERF125XWSI
160	140	180	40	90	7	80	55	20	10	30	65	26	18	25	CERF160X	-	CERF160XWS	-
200	175	220	40	90	7	85	60	25	14	30	75	26	18	25	CERF200X	-	CERF200XWS	-



Caratteristiche		Features	
CORPO CERNIERA		BODY	
Versione standard:		Standard version:	
Materiale	ALLUMINIO (GD-Al Si 12 Cu Fe UNI5076)	Material	ALUMINIUM (GD-Al Si 12 Cu Fe UNI5076)
Trattamento	SABBIATURA	Treatment	SANDBLASTING
Versione inox:		Stainless steel version:	
Materiale	ACCIAIO INOX AISI304	Material	STEEL AISI304
Trattamento	SABBIATURA	Treatment	SANDBLASTING
BUSSOLE		BUSH	
Versione standard:		Standard version:	
Materiale	ACCIAIO/PTFE	Material	STEEL/PTFE
Trattamento	-	Treatment	-

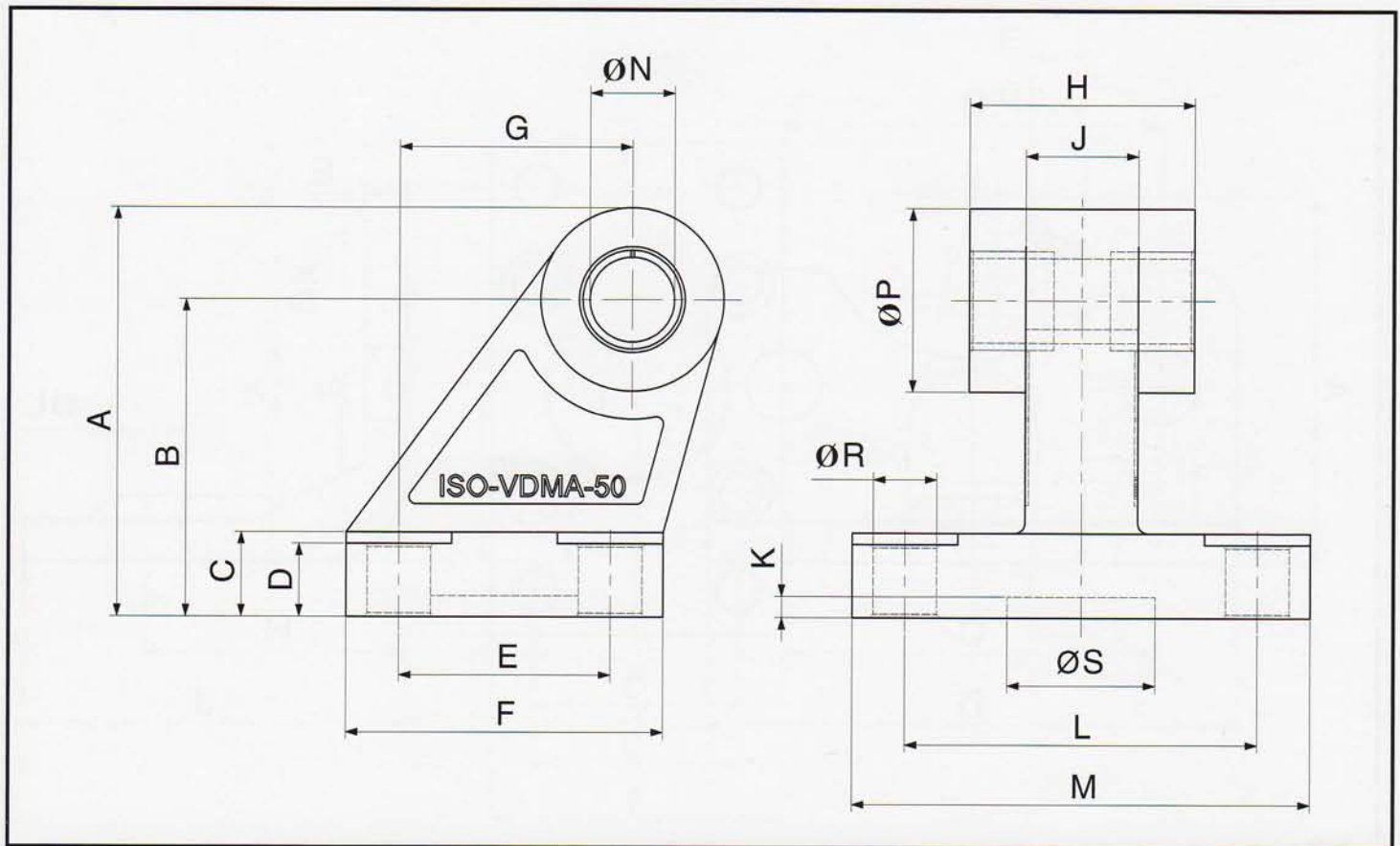
NOTA: disponibile anche completo di perno e viti (cod: CERF «Ø» XP / CERF «Ø» XPI)
NOTE: also available complete of pivot and screws (cod: CERF «Ø» XP / CERF «Ø» XPI)



Ø	A	B	C	D	E	F	G	H	ØJ	ØK	ØL	ØM	RN	COD.			
														Con viti / With screws		Senza viti / Without screws	
														Std.	Inox	Std.	Inox
32	45	32,5	26	5	32	22	9	3,5	10	30	11	6,6	10	CERM32X	CERM32XI	CERM32XWS	CERM32XWSI
40	52	38	28	5	37	25	9	3,5	12	35	11	6,6	12	CERM40X	CERM40XI	CERM40XWS	CERM40XWSI
50	65	46,5	32	5	39	27	11	4,5	12	40	15	9	12	CERM50X	CERM50XI	CERM50XWS	CERM50XWSI
63	75	56,5	40	5	48	32	11	4,5	16	45	15	9	16	CERM63X	CERM63XI	CERM63XWS	CERM63XWSI
80	95	72	50	5	52	36	14	4	16	45	18	11	16	CERM80X	CERM80XI	CERM80XWS	CERM80XWSI
100	115	89	60	5	61	41	14	4	20	55	18	11	20	CERM100X	CERM100XI	CERM100XWS	CERM100XWSI
125	140	110	70	7	75	50	20	10	25	60	20	14	25	CERM125X	CERM125XI	CERM125XWS	CERM125XWSI
160	180	140	90	7	80	55	20	10	30	65	26	18	25	CERM160X	-	CERM160XWS	-
200	220	175	90	7	85	60	25	14	30	75	26	18	25	CERM200X	-	CERM200XWS	-



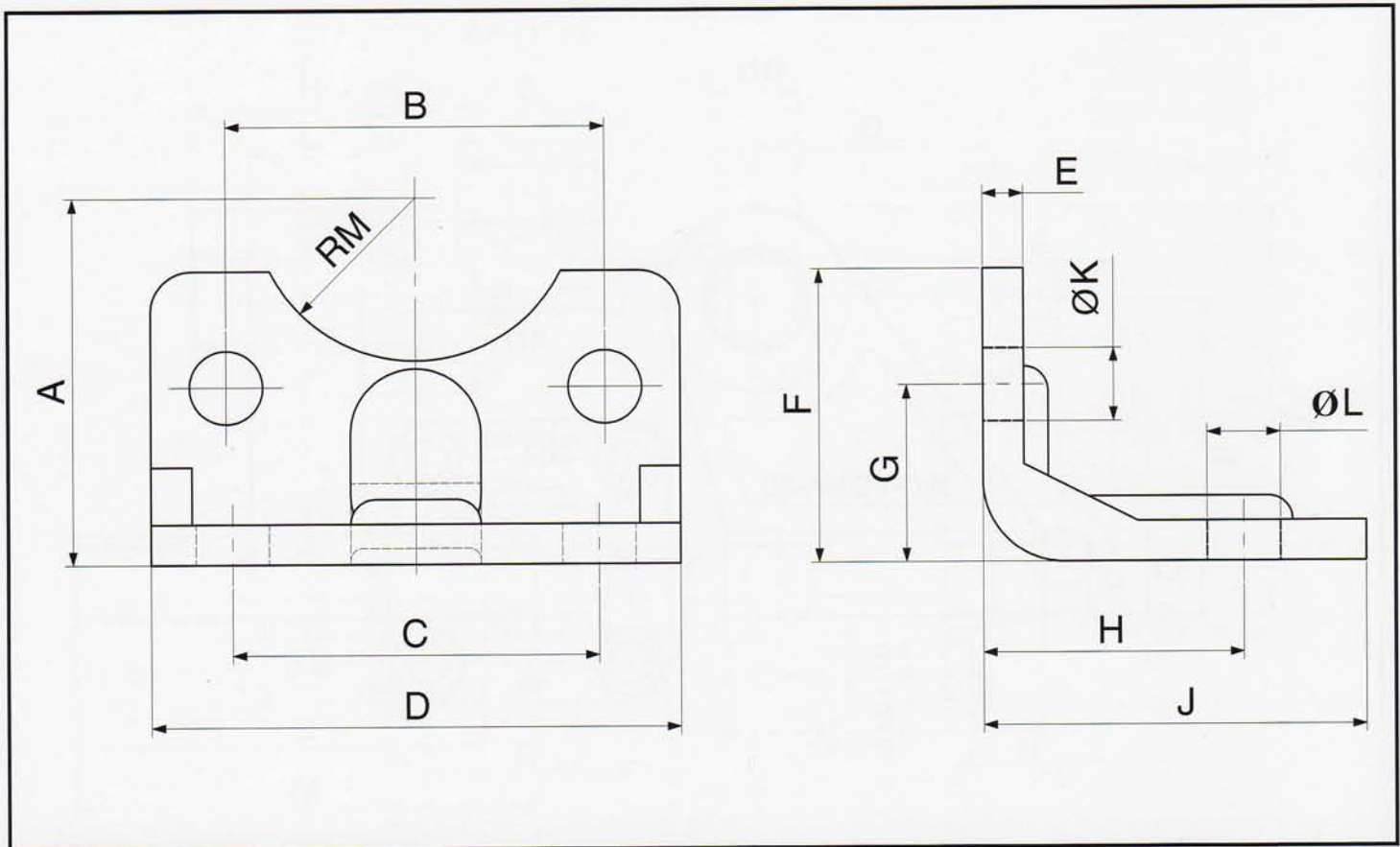
Caratteristiche		Features	
CORPO CERNIERA		BODY	
Versione standard:		Standard version:	
Materiale	ALLUMINIO (GD-Al Si 12 Cu Fe UNI5076)	Material	ALUMINIUM (GD-Al Si 12 Cu Fe UNI5076)
Trattamento	SABBIATURA	Treatment	SANDBLASTING
Versione inox:		Stainless steel version:	
Materiale	ACCIAIO INOX AISI304	Material	STAINLESS STEEL AISI304
Trattamento	SABBIATURA	Treatment	SANDBLASTING
BUSSOLE		BUSH	
Versione standard:		Standard version:	
Materiale	ACCIAIO/PTFE	Material	STEEL/PTFE
Trattamento	-	Treatment	-



Ø	A	B	C	D	E	F	G	H	J	K	L	M	ØN	ØP	ØR	ØS	COD.	
																	Std.	Inox
32	42	32	8	6,4	18	31	21	26	10	3	38	51	10	20	6,6	21	ART32X	ART32XI
40	47	36	10	8,4	22	35	24	28	15	3	41	54	12	22	6,6	21	ART40X	ART40XI
50	58	45	12	10,4	30	45	33	32	16	3	50	65	12	26	9	21	ART50X	ART50XI
63	65	50	14	12,4	35	50	37	40	16	3	52	67	16	30	9	21	ART63X	ART63XI
80	78	63	14	11,5	40	60	47	50	20	3	66	86	16	30	11	21	ART80X	ART80XI
100	90	71	17	14,5	50	70	55	60	20	3	76	96	20	38	11	11	ART100X	ART100XI
125	112,5	90	20	16,8	60	90	70	70	30	3	94	124	25	45	14	21	ART125X	ART125XI
160	146,5	115	25	21	88	126	97	90	36	5	118	156	30	63	14	31	ART160X	-
200	166,5	135	30	26	90	130	105	90	40	5	122	162	30	63	18	31	ART200X	-



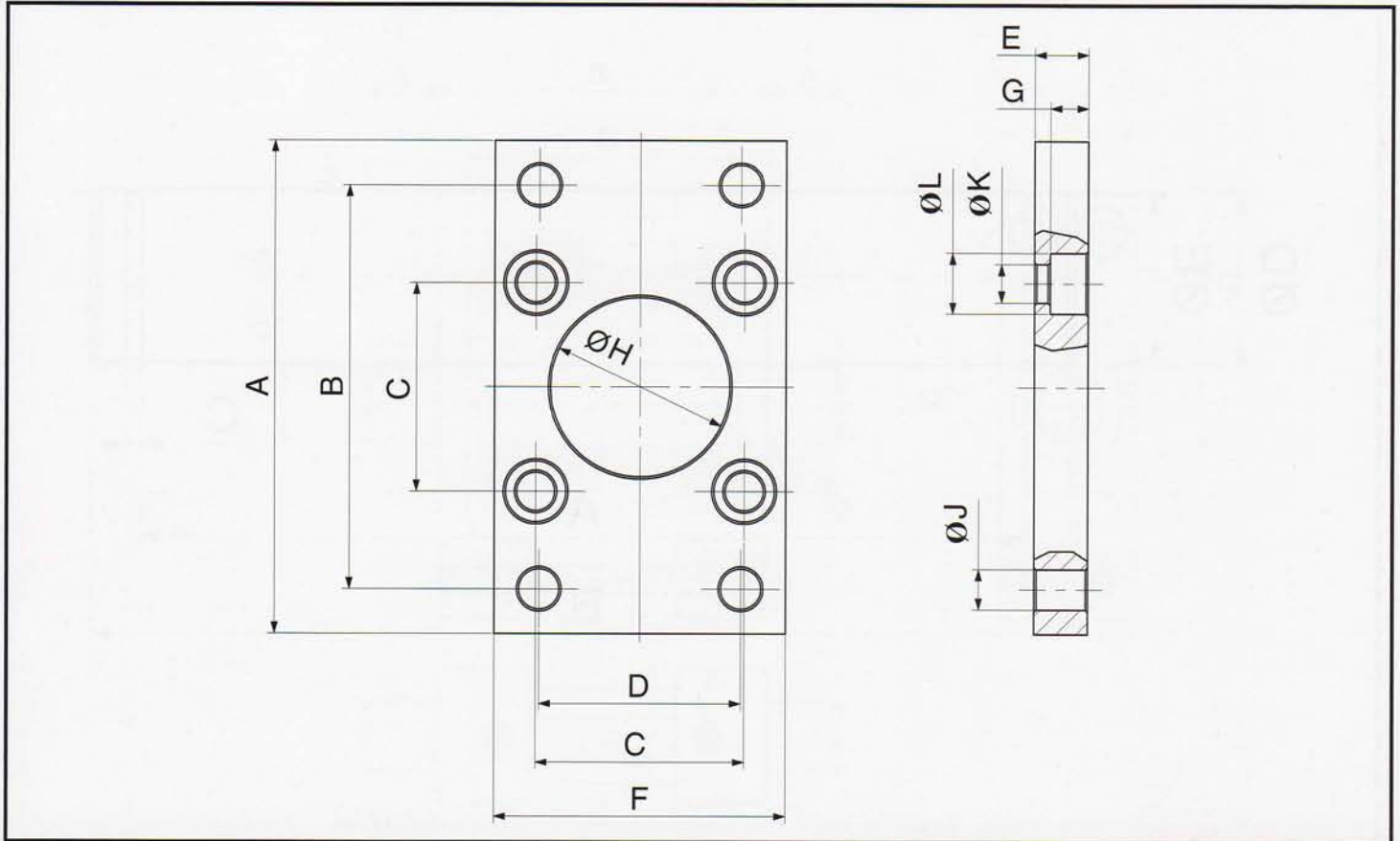
Caratteristiche		Features	
CORPO CERNIERA		BODY	
Versione standard:		Standard version:	
Materiale	ALLUMINIO (GD-Al Si 12 Cu Fe UNI5076)	Material	ALUMINIUM (GD-Al Si 12 Cu Fe UNI5076)
Trattamento	SABBIATURA	Treatment	SANDBLASTING
Versione inox:		Stainless steel version:	
Materiale	ACCIAIO INOX AISI304	Material	STAINLESS STEEL AISI304
Trattamento	SABBIATURA	Treatment	SANDBLASTING
BUSSOLE		BUSH	
Versione standard:		Standard version:	
Materiale	ACCIAIO/PTFE	Material	STEEL/PTFE
Trattamento	-	Treatment	-



Ø	A	B	C	D	E	F	G	H	J	ØK	ØL	RM	COD.			
													Con viti/With screws		Senza viti/Without screws	
													Std.	Inox	Std.	Inox
32	32	32,5	32	45	4	30	15,75	24	35	7	7	15	AF32X	AF32XI	AF32X/1	AF32XI/1
40	36	38	36	52	4	30	17	28	36	7	9	17,5	AF40X	AF40XI	AF40X/1	AF40XI/1
50	45	46,5	45	65	5	36	21,75	32	47	9	9	20	AF50X	AF50XI	AF50X/1	AF50XI/1
63	50	56,5	50	75	5	35	21,75	32	45	9	9	22,5	AF63X	AF63XI	AF63X/1	AF63XI/1
80	63	72	63	95	6	47	27	41	55	11	12	22,5	AF80X	AF80XI	AF80X/1	AF80XI/1
100	71	89	75	115	6	53	26,5	41	57	11	14	27,5	AF100X	AF100XI	AF100X/1	AF100XI/1
125	90	110	90	140	8	70	35	45	70	14	16	30	AF125X	AF125XI	AF125X/1	AF125XI/1
160	115	140	115	180	9	100	45	60	75	18	18	32,5	AF160X	-	AF160X/1	-
200	135	175	135	220	12	100	47,5	70	100	18	22	37,5	AF200X	-	AF200X/1	-



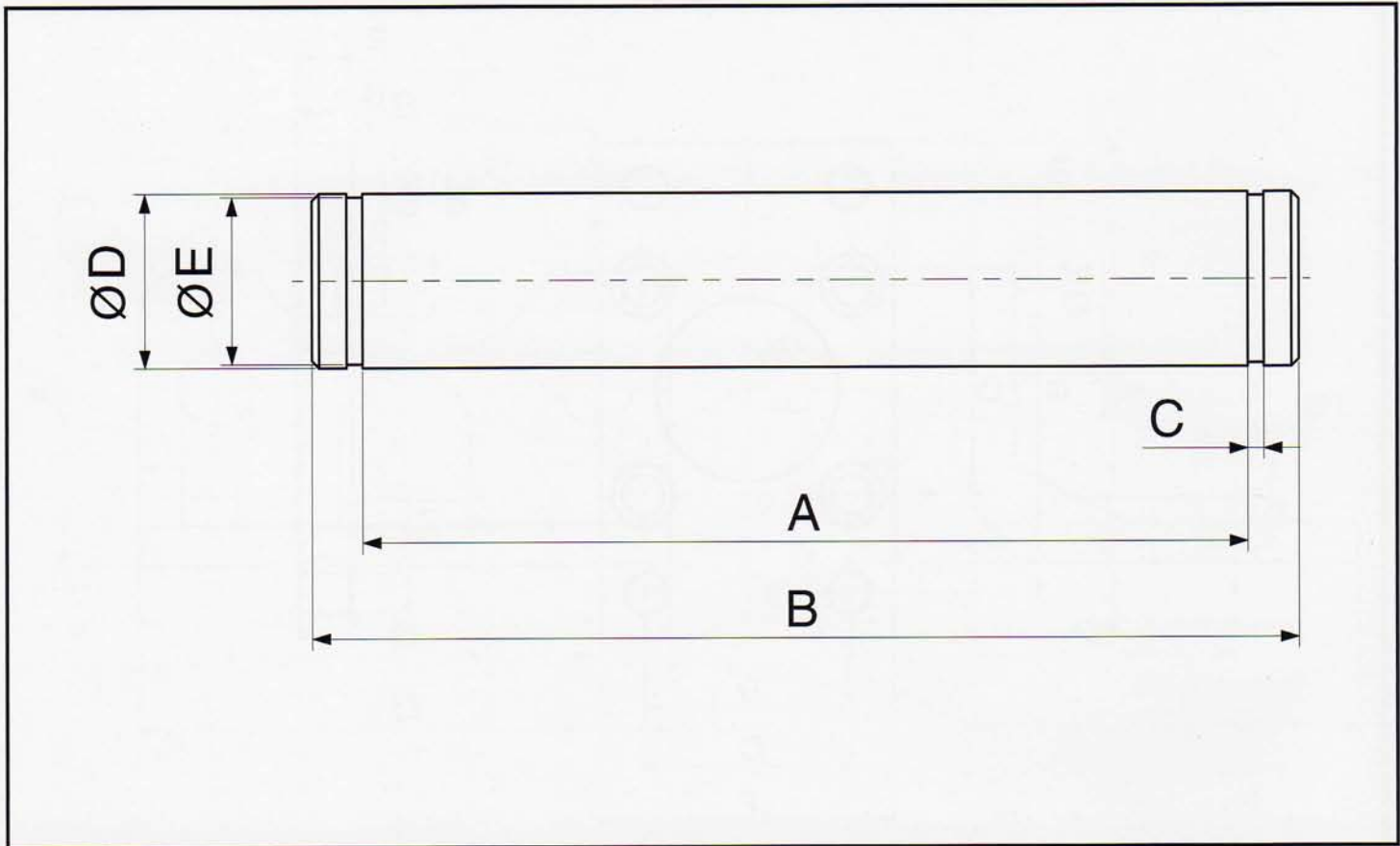
Caratteristiche		Features	
Versione standard:		Standard version:	
Materiale	ACCIAIO Fe37	Material	Fe37 STEEL
Trattamento	ZINCATURA	Treatment	ZINC COATING
Versione inox:		Stainless steel version:	
Materiale	ACCIAIO INOX AISI304	Material	AISI304
Trattamento	-	Treatment	-



\varnothing	A	B	C	D	E	F	G	$\varnothing H$	$\varnothing J$	$\varnothing K$	$\varnothing L$	COD.			
												Con viti / With screws		Senza viti / Without screws	
												Std.	Inox	Std.	Inox
32	80	64	32,5	32	10	45	6,5	30	7	6,5	10,5	AFP32X	AFP32XI	AFP32X/1	AFP32XI/1
40	90	72	38	36	10	52	6,5	35	9	6,5	10,5	AFP40X	AFP40XI	AFP40X/1	AFP40XI/1
50	110	90	46,5	45	12	65	8,5	40	9	8,5	13,5	AFP50X	AFP50XI	AFP50X/1	AFP50XI/1
63	120	100	56,5	50	12	75	8,5	45	9	8,5	13,5	AFP63X	AFP63XI	AFP63X/1	AFP63XI/1
80	150	126	72	63	16	95	10,5	45	12	10,5	16,5	AFP80X	AFP80XI	AFP80X/1	AFP80XI/1
100	170	150	89	75	16	115	10,5	55	14	10,5	16,5	AFP100X	AFP100XI	AFP100X/1	AFP100XI/1
125	205	180	110	90	20	140	12,5	60	16	13,5	20	AFP125X	AFP125XI	AFP125X/1	AFP125XI/1
160	260	230	140	115	20	180	16,5	65	18	17	25	AFP160X	-	AFP160X/1	-
200	300	270	175	135	25	220	16,5	75	22	17	25	AFP200X	-	AFP200X/1	-



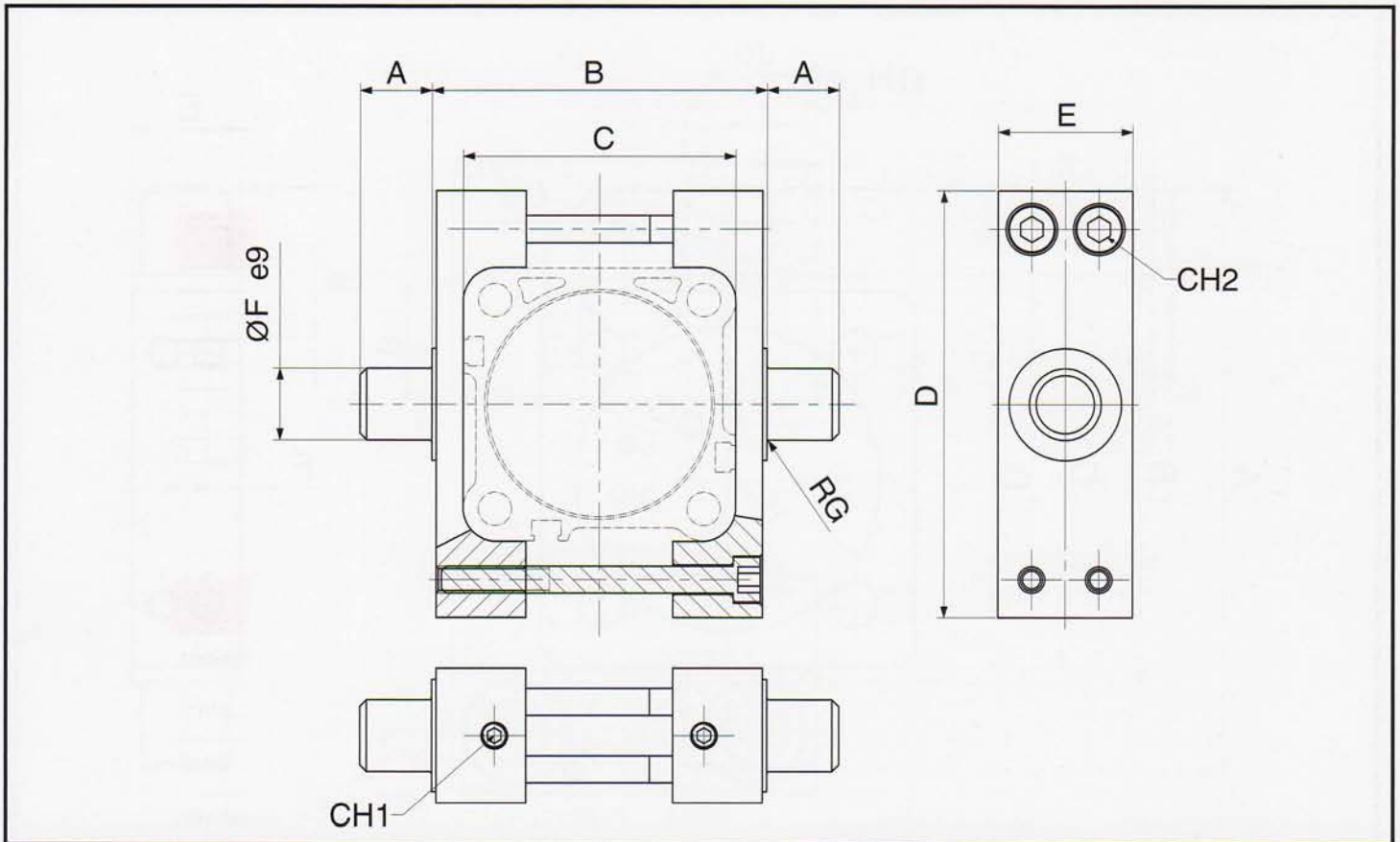
Caratteristiche		Features	
Versione standard:		Standard version:	
Materiale	ACCIAIO Fe37	Material	Fe37 STEEL
Tattamento	ZINCATURA	Treatment	ZINC COATING
Versione inox:		Stainless steel version:	
Materiale	ACCIAIO INOX AISI304	Material	AISI304
Tattamento	-	Treatment	-



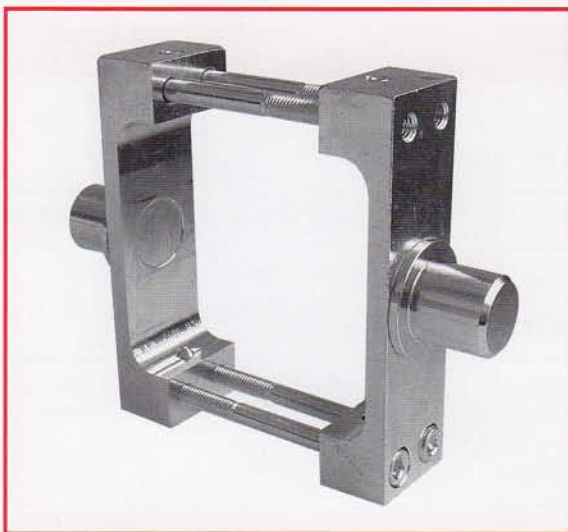
Ø	A	B	C	ØD	ØE	COD.	
						Std.	Inox
32	46	53	1,1	10	9,6	PERC32X	PERC32XI
40	53	60	1,1	12	11,5	PERC40X	PERC40XI
50	61	68	1,1	12	11,5	PERC50X	PERC50XI
63	71	78	1,1	16	15,2	PERC63X	PERC63XI
80	91	98	1,1	16	15,2	PERC80X	PERC80XI
100	111	118	1,3	20	19	PERC100X	PERC100XI
125	132	139	1,3	25	23,9	PERC125X	PERC125XI
160/200	171,5	178	1,6	30	28,6	PERC160200X	PERC160200XI



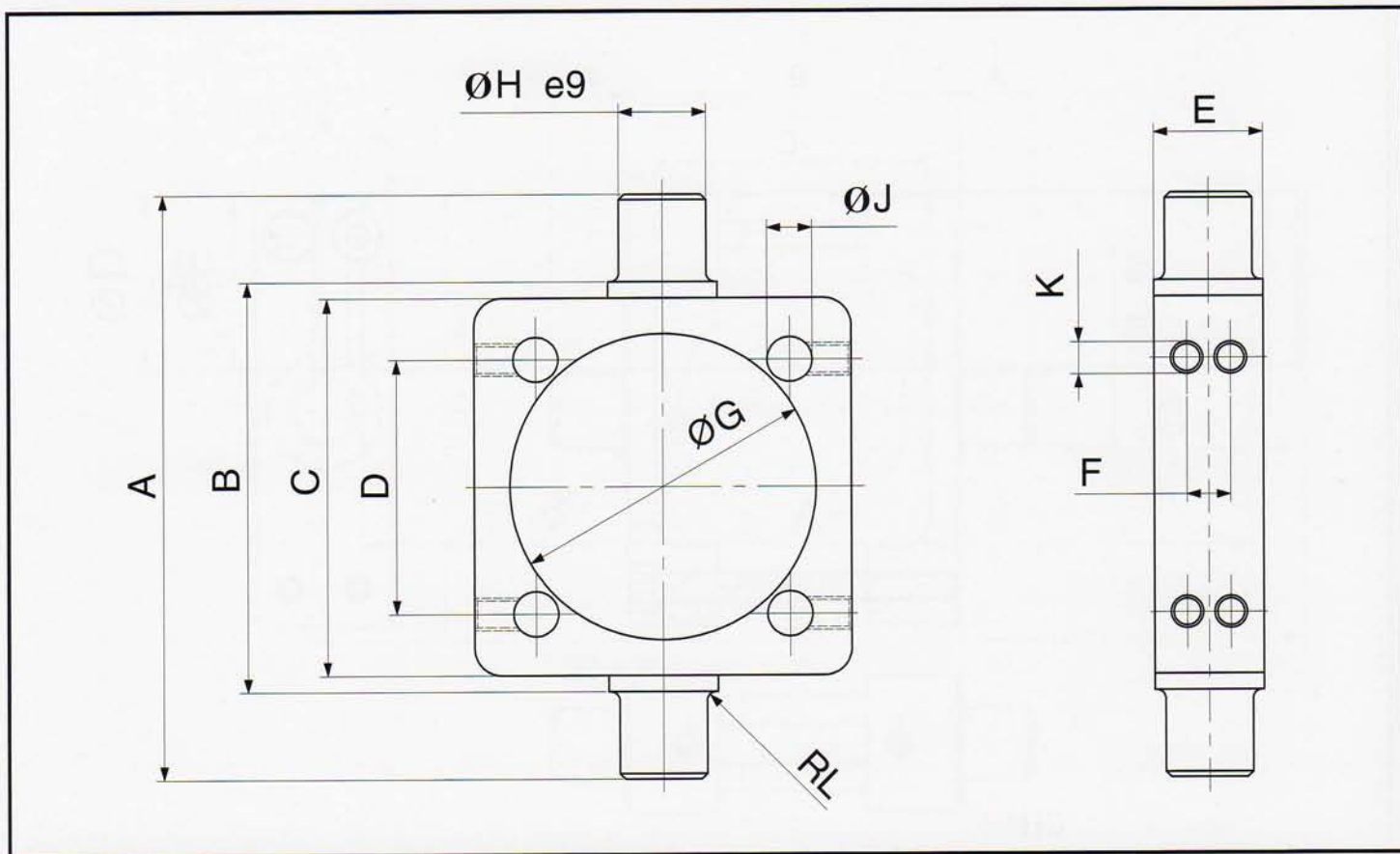
Caratteristiche		Features	
Versione standard:		Standard version:	
Materiale	ACCIAIO AVP	Material	AVP STEEL
Trattamento	ZINCATURA	Treatment	ZINC COATING
Versione inox:		Stainless steel version:	
Materiale	ACCIAIO INOX AISI304	Material	AISI304
Trattamento	-	Treatment	-



Ø	A	B	C	D	E	ØF	RG	CH1	CH2	Cod.
32	12	50	45	65	25	12	1	3	4	CERI32X
40	16	63	51,8	75	25	16	1,5	3	4	CERI40X
50	16	75	60,7	95	30	16	1,6	3	4	CERI50X
63	20	90	72,2	105	30	20	1,6	3	4	CERI63X
80	20	110	91,2	130	30	20	1,6	3	4	CERI80X
100	25	132	108,2	145	40	25	2	3	5	CERI100X
125	25	160	135,3	176	40	25	2	4	6	CERI125X
160										
200										



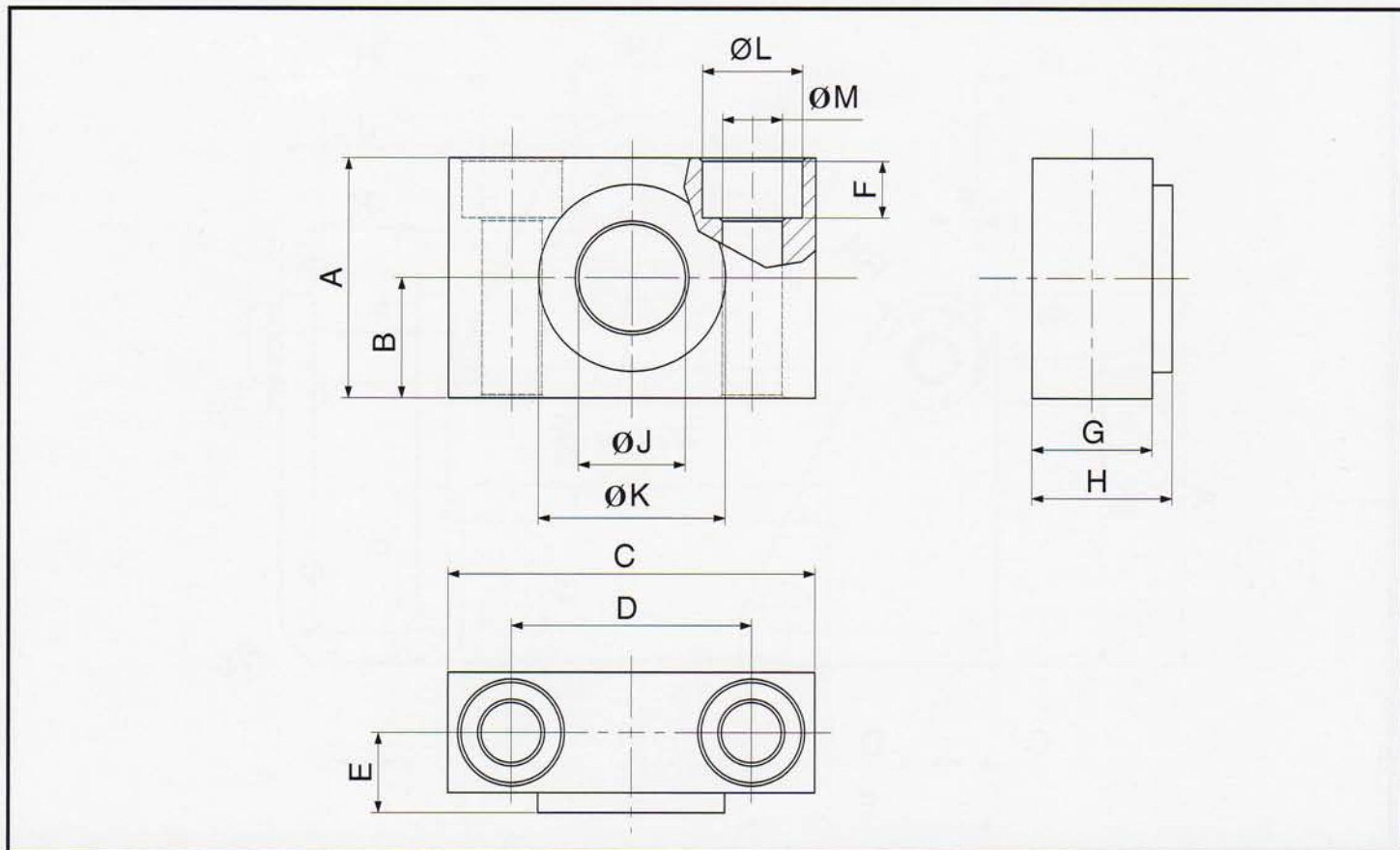
Caratteristiche		Features	
Staffe		Body	
Materiale	ACCIAIO C40	Material	C40 STEEL
Trattamento	ZINCATURA BIANCA	Treatment	WHITE ZINC COATING
Perni		Pivots	
Materiale	ACCIAIO PR80	Material	PR80 STEEL
Trattamento	ZINCATURA BIANCA	Treatment	WHITE ZINC COATING
Viti		Screws	
Materiale	ACCIAIO CLASSE 8.8	Material	8.8 CLASS STEEL
Trattamento	ZINCATURA BIANCA	Treatment	WHITE ZINC COATING
Grani		Grub Screws	
Materiale	ACCIAIO CLASSE 45H	Material	45H CLASS STEEL
Trattamento	FOSFATAZIONE NERA	Treatment	BLACK PHOSPHATING



\varnothing	A	B	C	D	E	F	$\varnothing G$	$\varnothing H$	$\varnothing J$	K	RL	COD.	
												Std.	Inox
32	74	50	46	32,5	15	7	37	12	6,25	M5	1	CERI32XR	CERI32XI
40	95	63	59	38	20	8	46	16	6,25	M5	1,5	CERI40XR	CERI40XI
50	107	75	69	46,5	20	8	56	16	8,25	M6	1,6	CERI50XR	CERI50XI
63	130	90	84	56,5	25	12	69	20	8,25	M6	1,6	CERI63XR	CERI63XI
80	150	110	102	72	25	12	87	20	10,25	M8	1,6	CERI80XR	CERI80XI
100	182	132	125	89	30	15	107	25	10,25	M8	2	CERI100XR	CERI100XI
125	210	160	155	110	32	15	133	25	12,25	M10	2	CERI125XR	CERI125XI
160	264	200	190	140	40	18	170	32	16,25	M12	2,5	CERI160XR	CERI160XI
200	314	250	240	175	40	18	211	32	16,25	M12	2,5	CERI200XR	CERI200XI



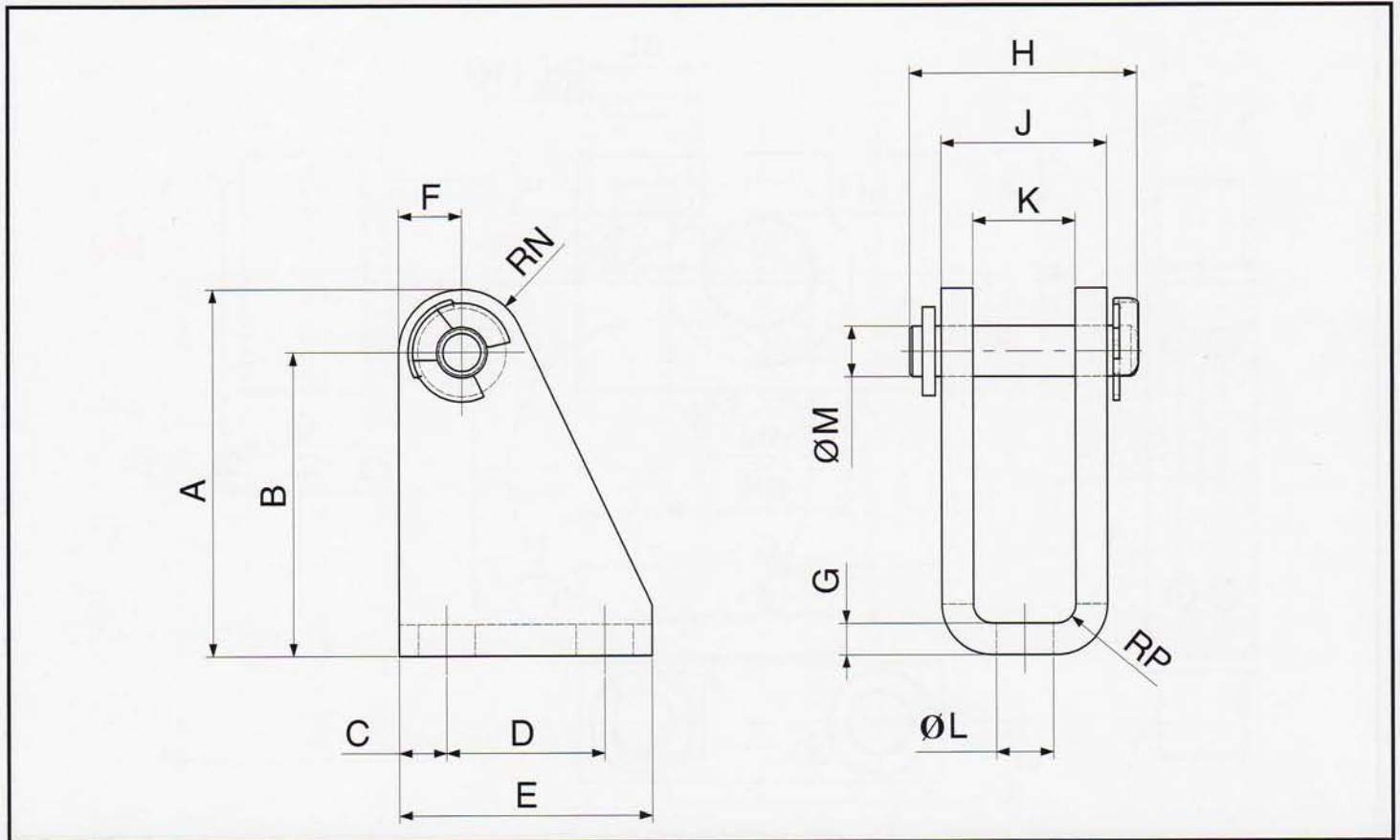
Caratteristiche		Features	
Versione standard:		Standard version:	
Materiale	ACCIAIO A105	Material	A105 STEEL
Trattamento	ZINCATURA BIANCA	Treatment	WHITE ZINC COATING
Versione inox:		Stainless steel version:	
Materiale	ACCIAIO INOX AISI304	Material	AISI304
Trattamento	-	Treatment	-



Ø	A	B	C	D	E	F	G	H	ØJ	ØK	ØL	ØM	Cod.
32	30	15	46	32	10,5	7	15	18	12	22	11	6,6	SUP32X
40-50	36	18	55	36	12	9	18	21	16	28	15	9	SUP4050X
63-80	40	20	65	42	13	11	20	23	20	32	18	11	SUP5063X
100-125	50	25	75	50	16	13	25	28,5	25	39	20	14	SUP100125X
160-200	60	30	92	60	22,5	17	35	40	32	45	26	18	SUP160200X



Caratteristiche		Features	
Corpo		Body	
Materiale	ACCIAIO Fe37	Material	Fe37 STEEL
Trattamento	ZINCATURA	Treatment	ZINC COATING
Bussola		Bush	
Materiale	BRONZO SINTERIZZATO	Material	SINTERED BRONZE
Trattamento	-	Treatment	-

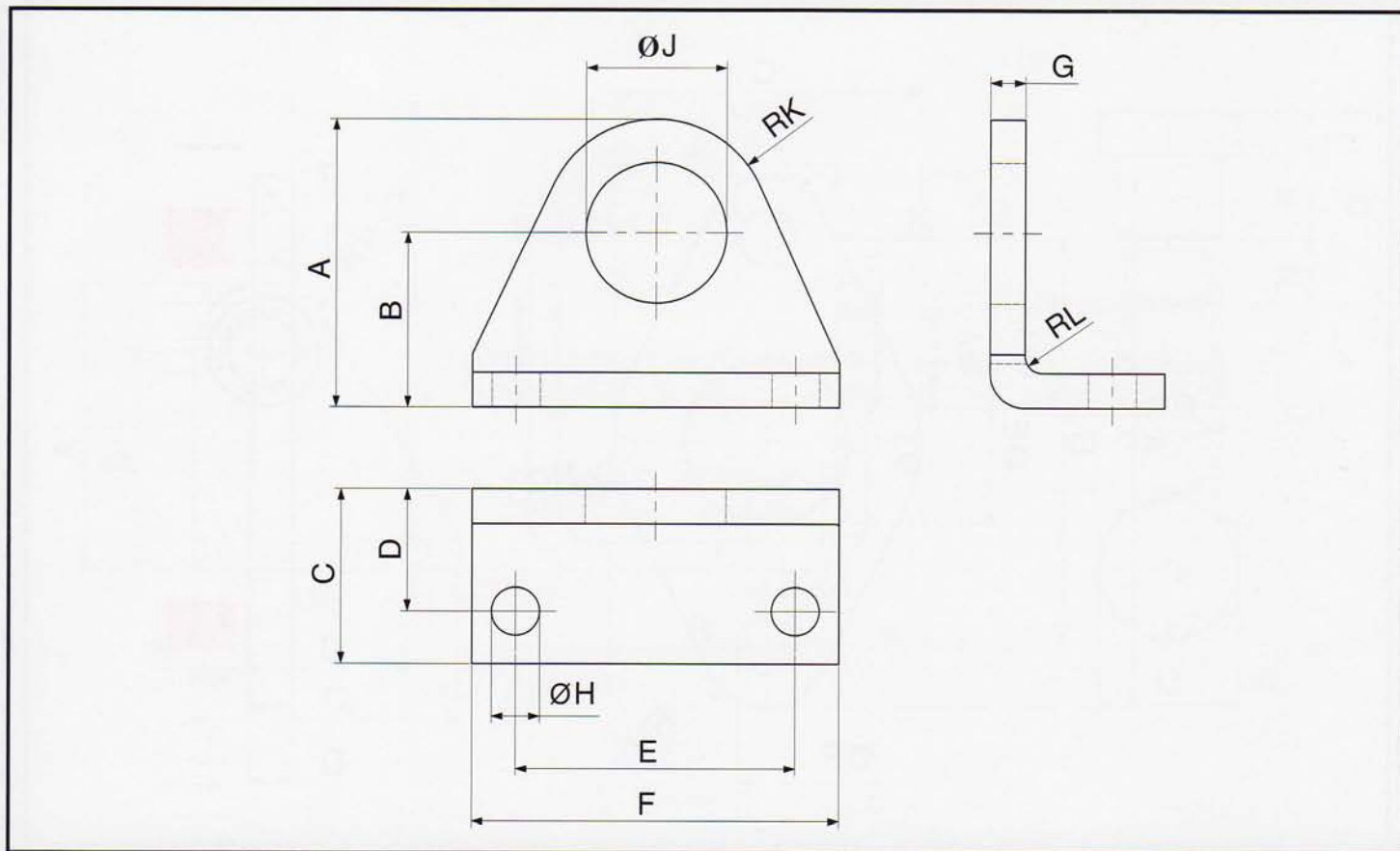
**ISO 6432 MINICILINDRI
ISO 6432 MINICYLINDERS**


Ø	A	B	C	D	E	F	G	H	J	K	ØL	ØM	RN	RP	COD.	
															Std.	Inox
08/10	29	24	3,75	12,5	20	5	2,5	18	13,1	8,1	4,5	4	5	1,5	AFO8/10	AFO8/10I
12/16	34	27	5	15	25	7	3	24	18,1	12,1	5,5	6	7	1,5	AFO12/16	AFO12/16I
20/25	40	30	6	20	32	10	4	31	24,1	16,1	6,6	8	10	2	AFO20/25	AFO20/25I



Caratteristiche		Features	
CORPO CERNIERA		BODY	
Versione standard:		Standard version:	
Materiale	ACCIAIO Fe37	Material	Fe37 STEEL
Trattamento	ZINCATURA BIANCA	Treatment	WHITE ZINC COATING
Versione inox:		Stainless steel version:	
Materiale	ACCIAIO AISI304	Material	AISI304
Trattamento	-	Treatment	-
PERNO		PIVOT	
Versione standard:		Standard version:	
Materiale	ACCIAIO AVP	Material	AVP STEEL
Trattamento	ZINC COATING	Treatment	ZINC COATING
Versione inox:		Stainless steel version:	
Materiale	ACCIAIO INOX AISI304	Material	AISI304
Trattamento	-	Treatment	-

ISO 6432 MINICILINDRI
ISO 6432 MINICYLINDERS

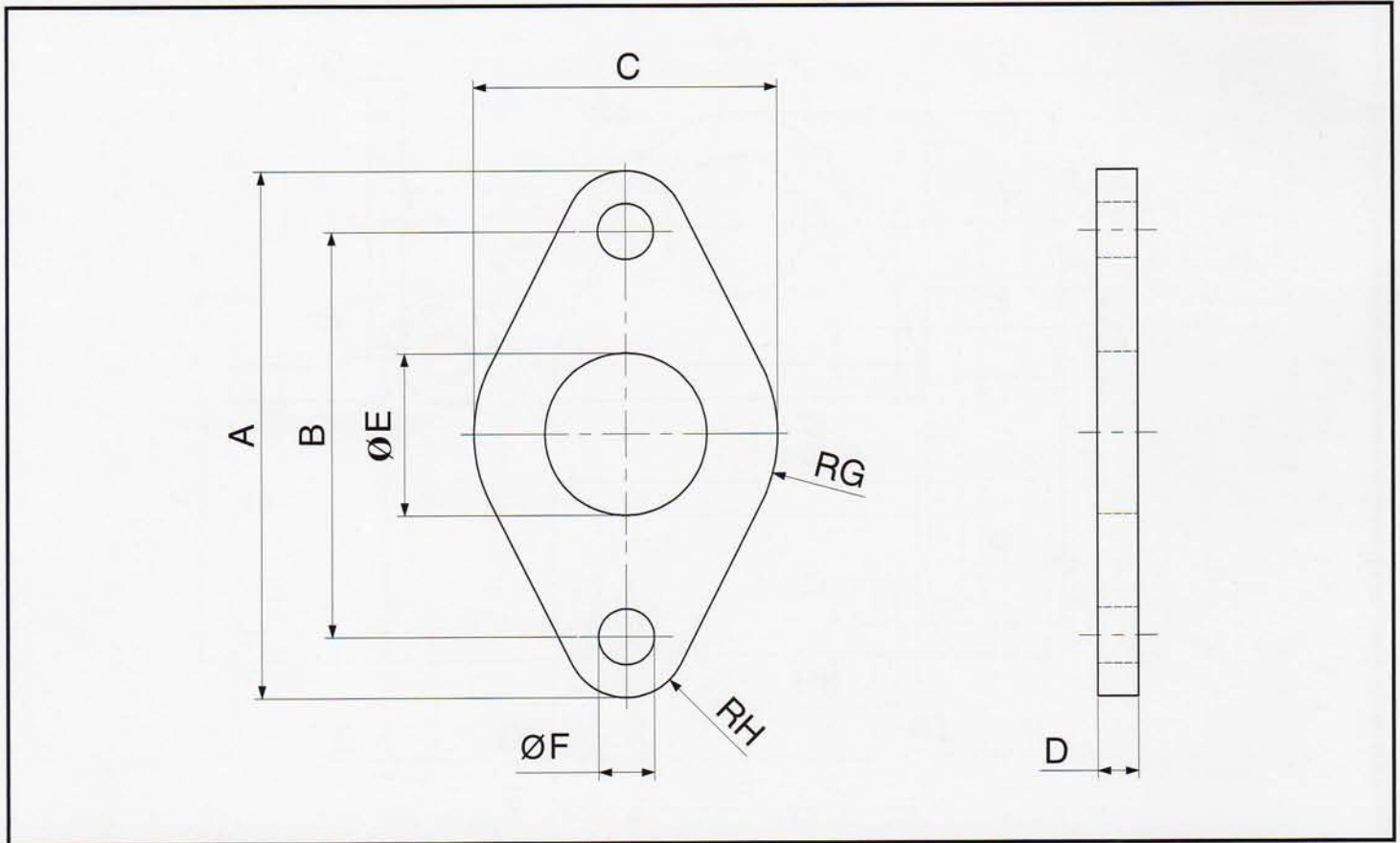


Ø	A	B	C	D	E	F	G	ØH	ØJ	RK	RL	COD.	
												Std.	Inox.
08/10	26	16	16	11	25	35	3	4,5	12	10	1,5	AP08/10	-
12/16	33	20	20	14	32	42	4	5,5	16,1	13	2	AP12/16	AP12/16I
20/25	45	25	25	17	40	54	5	6,6	22,1	20	2,5	AP20/25	AP20/25I



Caratteristiche		Features	
Versione standard:		Standard version:	
Materiale	ACCIAIO Fe37	Material	Fe37 STEEL
Trattamento	ZINCATURA BIANCA	Treatment	WHITE ZINC COATING
Versione inox:		Stainless steel version:	
Materiale	ACCIAIO INOX AISI304	Material	AISI304
Trattamento	-	Treatment	-

ISO 6432 MINICILINDRI
ISO 6432 MINICYLINDERS

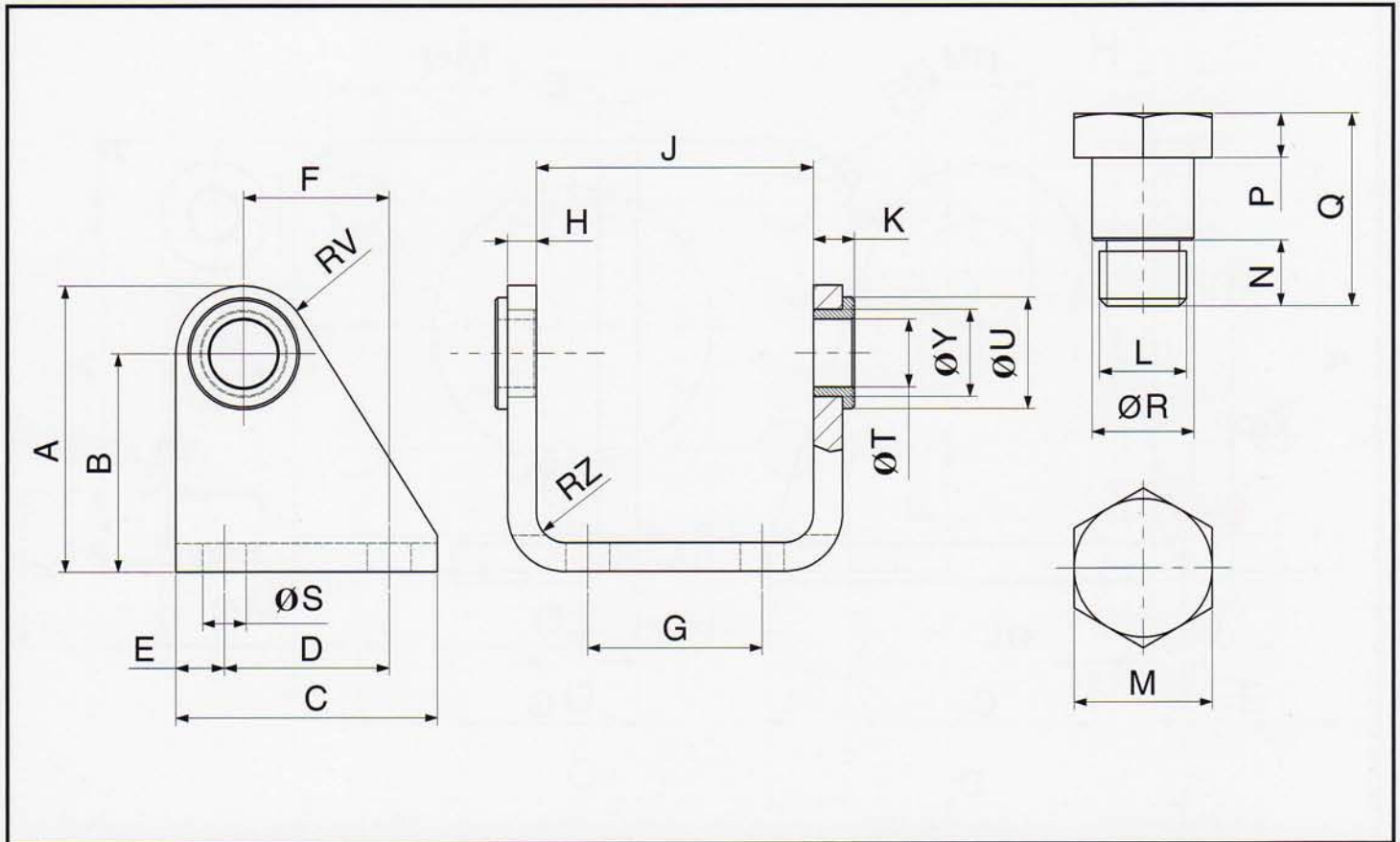


Ø	A	B	C	D	ØE	ØF	RG	RH	COD.	
									Std.	Inox
08/10	40	30	22	3	12	4,5	11	5	AF08/10	-
12/16	52	40	30	4	16	5,5	15	6	AF12/16	AF12/16I
20/25	66	50	40	5	22	6,6	20	8	AF20/25	AF20/25I



Caratteristiche		Features	
Versione standard:		Standard version:	
Materiale	ACCIAIO Fe37	Material	Fe37 STEEL
Trattamento	ZINCATURA BIANCA	Treatment	WHITE ZINC COATING
Versione inox:		Stainless steel version:	
Materiale	ACCIAIO INOX AISI304	Material	AISI304
Trattamento	-	Treatment	-

CILINDRI TONDI
ROUND CYLINDERS

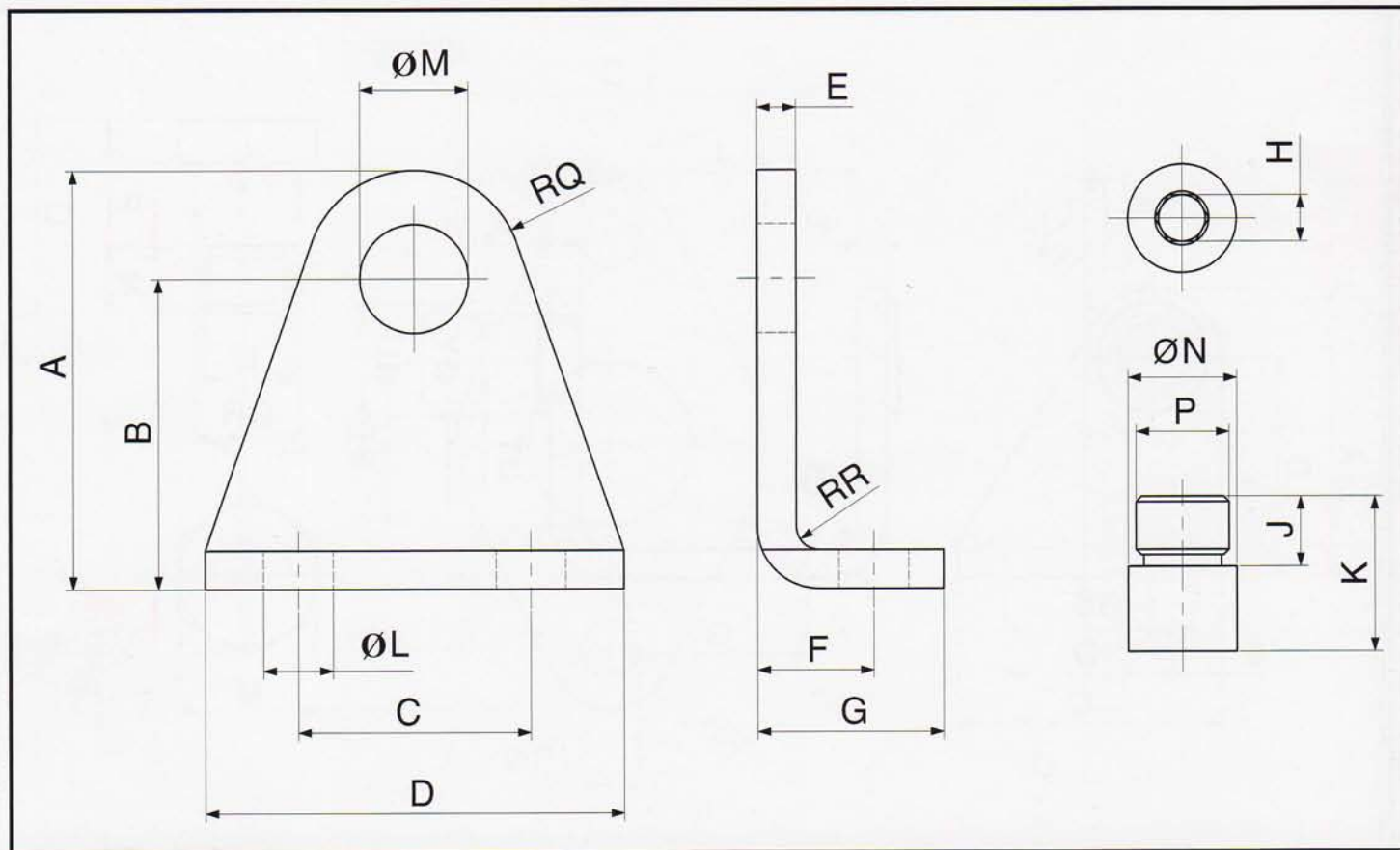


Ø	A	B	C	D	E	F	G	H	J	K	L	M	N	P	Q	ØR	ØS	ØT	ØU	RV	RZ	ØY	COD.	
																							Std.	Inox
32	47	35	40	24	8	20	20	4	38,1	6	M8x1	13	6	4	18	10	7	10	15	12	4	12	ACB32	ACB32I
40	53	40	50	30	10	27	28	5	46,1	7	M10x1	17	7	5	21,6	12	9	12	20	13	5	15	ACB40	ACB40I
50	59	45	54	34	10	30	36	6	57,1	8,5	M12x1,5	19	9	6	26,4	14	9	14	23	14	6	18	ACB50	ACB50I
63	66	50	65	35	15	34	42	6	70,1	8,5	M14x1,5	19	13	6	31,5	16	9	16	23	16	6	20	ACB63	ACB63I



Caratteristiche	Features
<p>CORPO CERNIERA</p> <p>Versione standard: Materiale ACCIAIO (FeP 10 Mg UNI 5867) Trattamento ZINCATURA BIANCA</p> <p>Versione inox: Materiale ACCIAIO INOX AISI304 Trattamento -</p>	<p>BODY</p> <p>Standard version: Material STEEL (FeP 10 MG UNI 5867) Treatment WHITE ZINC COATING</p> <p>Stainless steel version: Material AISI304 Treatment -</p>
<p>BUSSOLA</p> <p>Versione standard: Materiale OTTONE</p> <p>Versione inox: Materiale DELRIN</p>	<p>BUSH</p> <p>Standard version: Material BRASS</p> <p>Stainless steel version: Material DELRIN</p>
<p>VITI</p> <p>Versione standard: Materiale ACCIAIO (95 MnPb 36 UNI 5105) Trattamento ZINCATURA BIANCA</p> <p>Versione inox: Materiale ACCIAIO AISI303</p>	<p>SCREWS</p> <p>Standard version: Material STEEL (95 MnPb 36 UNI 5105) Treatment WHITE ZINC COATING</p> <p>Stainless steel version: Material AISI303</p>

CILINDRI TONDI ROUND CYLINDERS

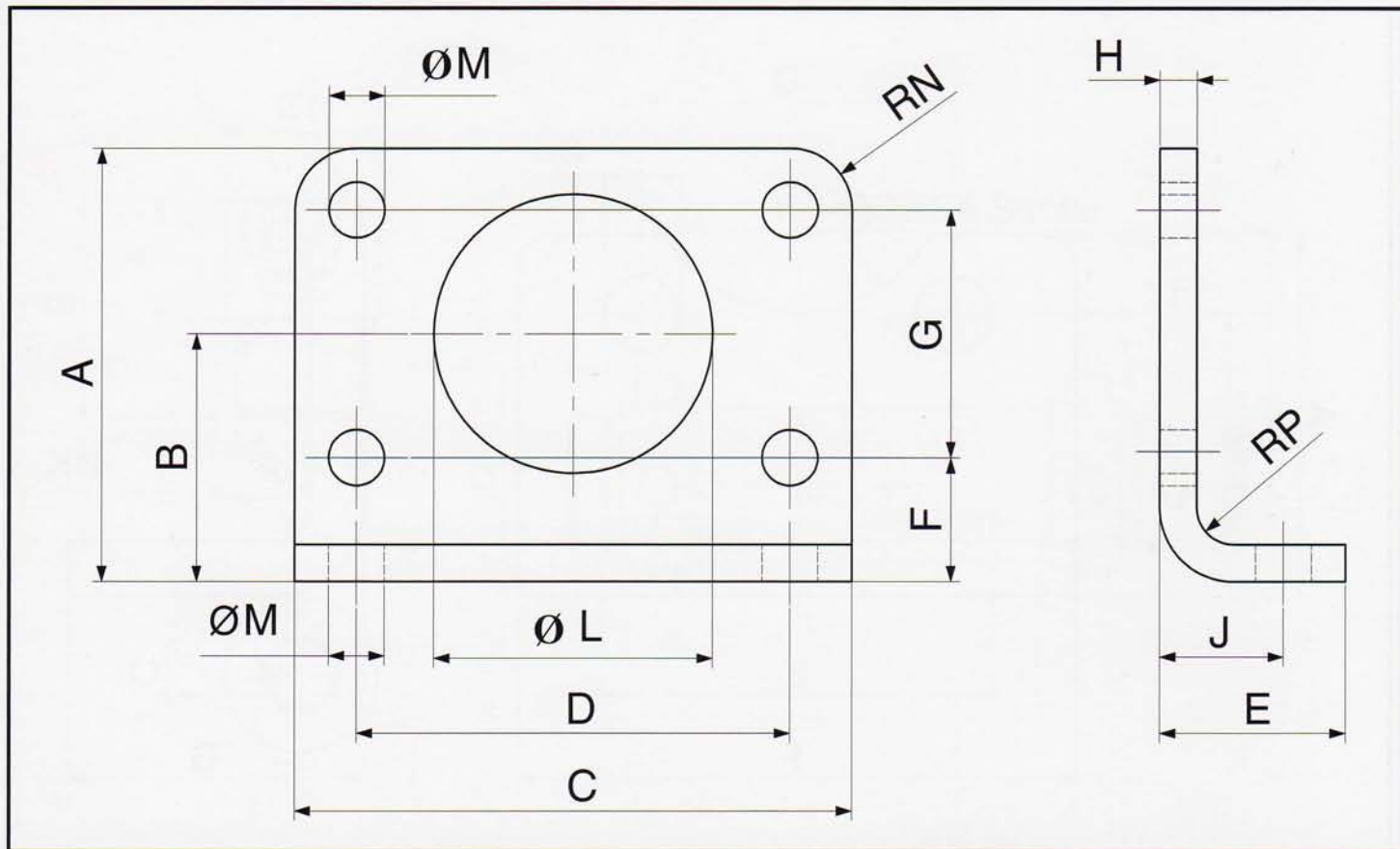


Ø	A	B	C	D	E	F	G	H	J	K	ØL	ØM	ØN	P	RQ	RR	COD.
32	36	25	20	35	4	13	20	5	8	14	7	10	10	M8x1	11	2	ACB32E
40	40	28	28	42	4	13	20	6	9,5	16,5	7	12	12	M10x1	12	2	ACB40E
50	54	40	30	54	5	15	24	6	11	20	9	14	14	M12x1,5	14	3	ACB50E
63	63	47	40	64	5	17,5	26,5	8	13	26	9	14	16	M14x1,5	16	3	ACB63E



Caratteristiche		Features	
Corpo cerniera		Body	
Materiale	ACCIAIO Fe37	Material	Fe37 STEEL
Trattamento	ZINCATURA BIANCA	Treatment	WHITE ZINC COATING
Perno		Pivot	
Materiale	ACCIAIO (9 S Mn Pb 36 UNI 5105)	Material	STEEL (9 S Mn Pb 36 UNI 5105)
Trattamento	ZINCATURA BIANCA	Treatment	WHITE ZINC COATING

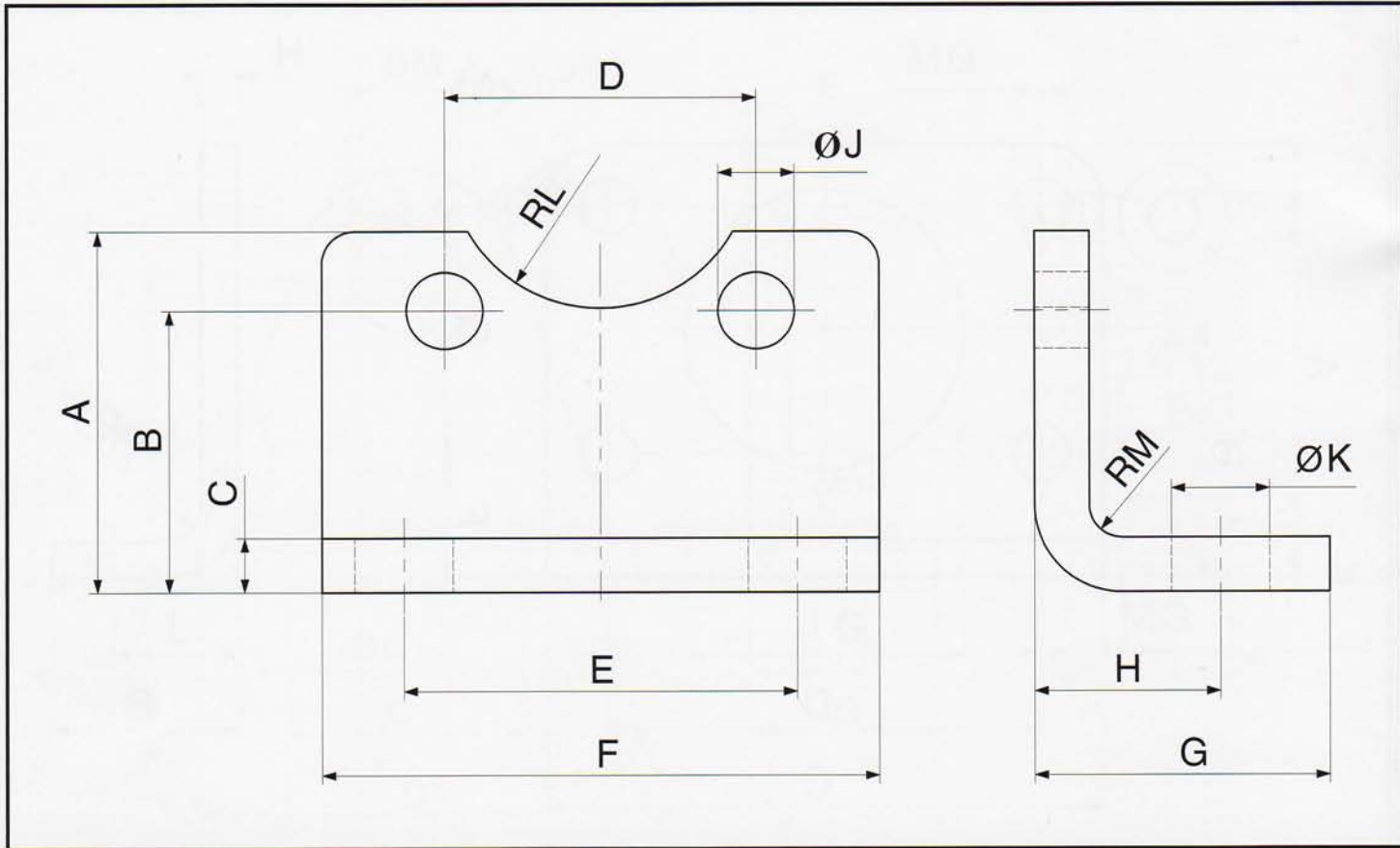
CILINDRI TONDI
ROUND CYLINDERS



Ø	A	B	C	D	E	F	G	H	J	ØL	ØM	RN	RP	COD.	
														Std.	Inox
32	49	28	66	52	21	14	28	4	14	30	7	7	4	AF32	AF32I
40	58	33	80	60	30	18	30	5	20	38	9	10	5	AF40	AF40I
50	70	40	90	70	30	20	40	6	20	45	9	10	6	AF50	AF50I
63	80	45	96	76	30	20	50	6	20	45	9	10	6	AF63	AF63I



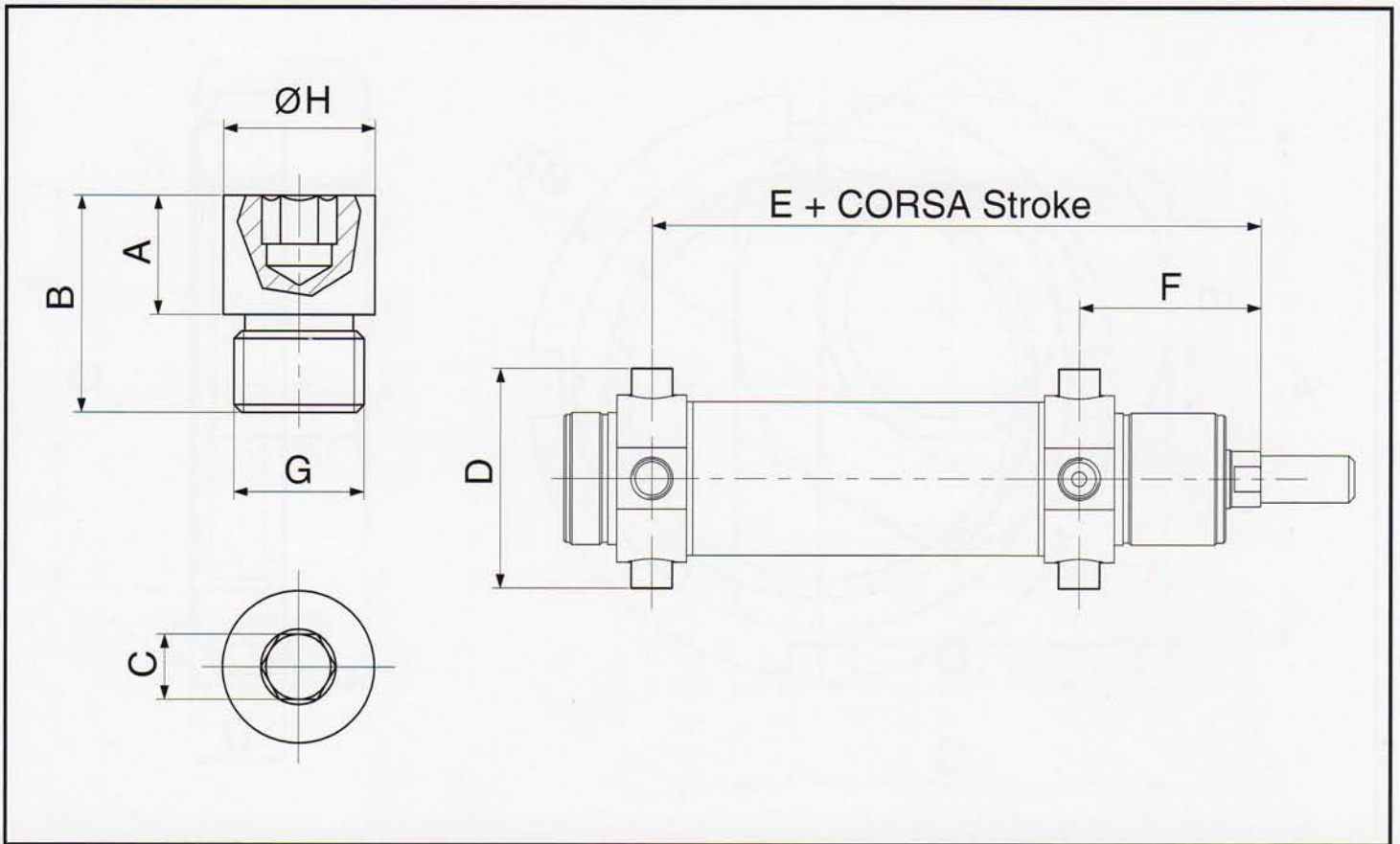
Caratteristiche		Features	
Versione standard:		Standard version:	
Materiale	ACCIAIO (FeP 10 MG UNI 5867)	Material	STEEL (FeP 10 MG UNI 5867)
Trattamento	ZINCATURA BIANCA	Treatment	WHITE ZINC COATING
Versione inox:		Stainless steel version:	
Materiale	ACCIAIO INOX AISI304	Material	AISI304
Trattamento	-	Treatment	-

**CILINDRI TONDI
ROUND CYLINDERS**


Ø	A	B	C	D	E	F	G	H	ØJ	ØK	RL	RM	COD.	
													Can viti With screws	Senza viti Without screws
32	22	15,5	4	19	18	32	23,5	16	5	7	10	2	AF32E	AF32E/1
40	23	16,25	4	23,5	27	40	23	16	6	7	11,5	2	AF40E	AF40E/1
50	33	25,75	5	28,5	36	51	27	17	7	9	14	3	AF50E	AF50E/1
63	38	29,25	5	35,5	45	61	29	19	9	9	17,5	3	AF63E	AF63E/1



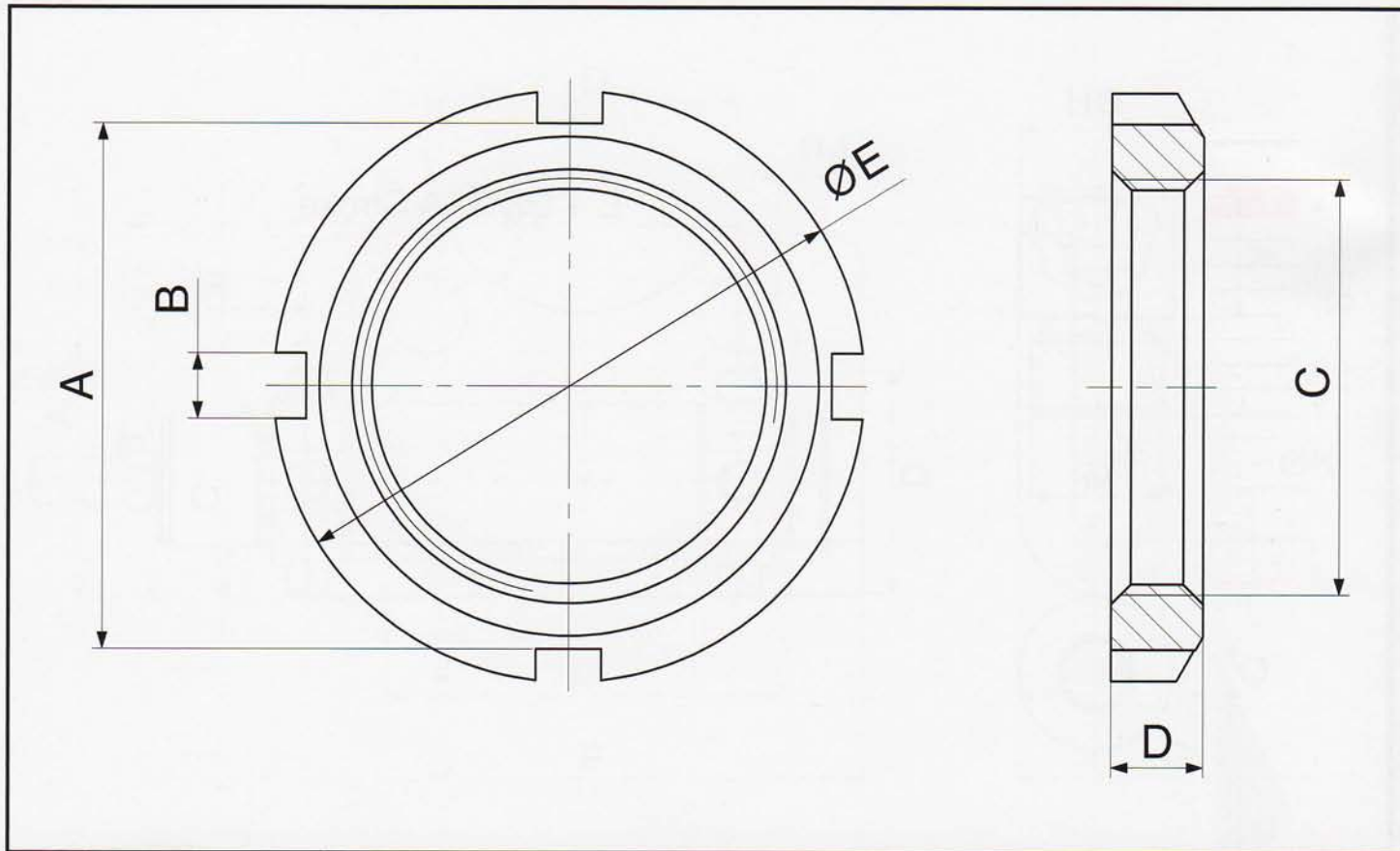
Caratteristiche		Features	
Versione standard:		Standard version:	
Materiale	ACCIAIO Fe37	Material	Fe37 STEEL
Trattamento	ZINCATURA BIANCA	Treatment	WHITE ZINC COATING

**CILINDRI TONDI
ROUND CYLINDERS**


									COD.			
Ø	A	B	C	D	E	F	G	ØH	Coppia std. Std. pair	Coppia INOX Stainless steel pair	Perno singolo std. Std. single pivot	Perno singolo INOX Stainless steel single pivot
32	8	14	5	51	125	47	M8x1	10	AP32	AP32I	PER32	PER32I
40	9,5	16,5	6	61	146	57	M10x1	12	AP40	AP40I	PER40	PER40I
50	11	20	6	75	158	62	M12x1,5	14	AP50	AP50I	PER50	PER50I
63	13	26	8	92	162	63	M14x1,5	16	AP63	AP63I	PER63	PER63I



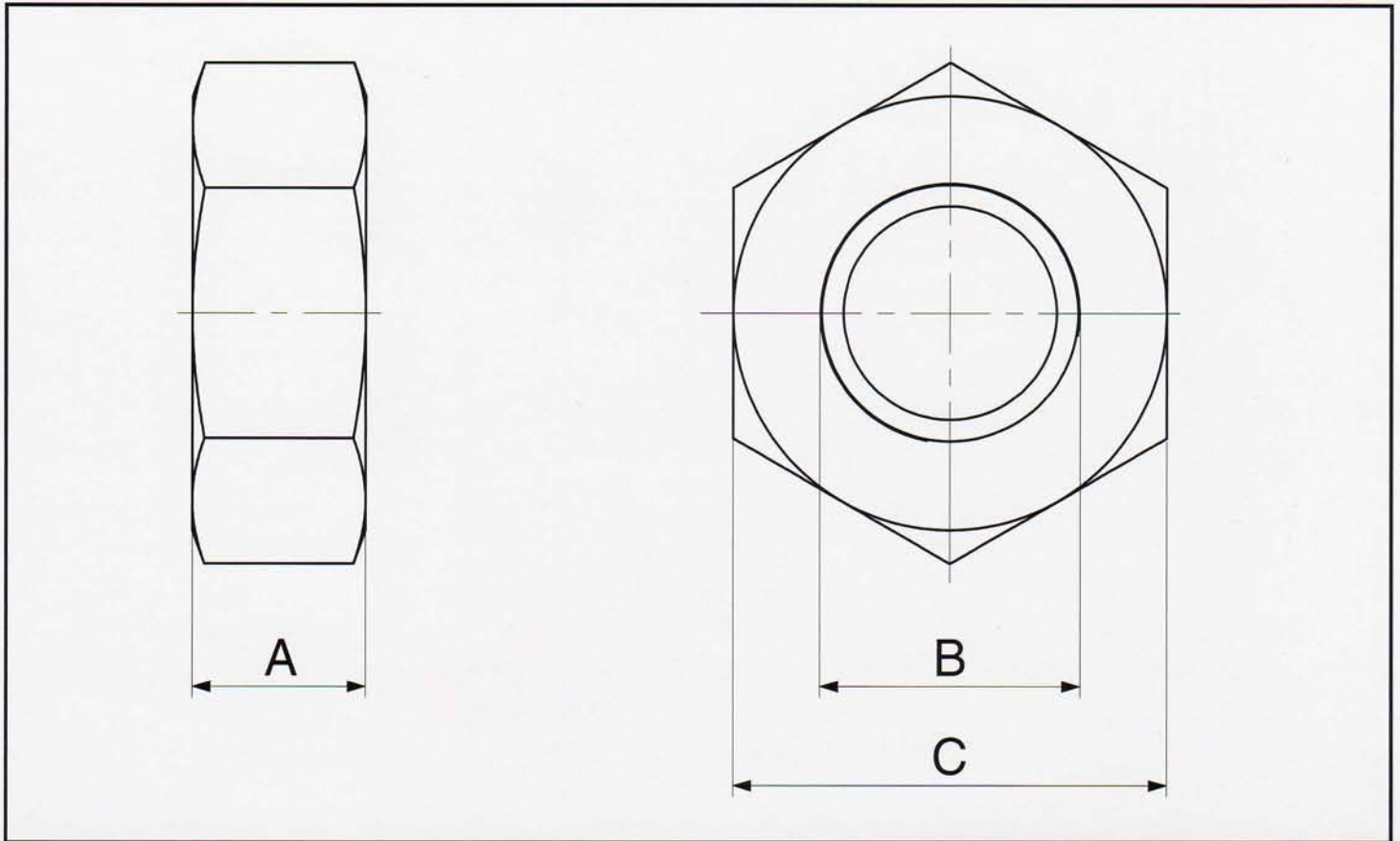
Caratteristiche		Features	
Versione standard:		Standard version:	
Materiale	ACCIAIO (9S Mn Pb 36 UNI 5105)	Material	STEEL (9S Mn Pb 36 UNI 5105)
Trattamento	ZINCATURA BIANCA	Treatment	WHITE ZINC COATING
Versione inox:		Stainless steel version:	
Materiale	ACCIAIO INOX AISI304	Material	AISI304
Trattamento	-	Treatment	-

**CILINDRI TONDI
ROUND CYLINDERS**


Ø	DIMENSIONI / DIMENSIONS					COD.	
	A	B	C	D	ØE	Std.	Inox
32	40	5	M30x1,5	7	45	AN32	AN32I
40	46	5	M38x1,5	8	50	AN40	AN40I
50-63	52	6	M45x1,5	9	58	AN50/63	AN50/63I



Caratteristiche		Features	
Versione standard:		Standard version:	
Materiale	ACCIAIO (95 Mn Pb 36 UNI 5105)	Material	STEEL (95 Mn Pb 36 UNI 5105)
Trattamento	ZINCATURA BIANCA	Treatment	WHITE ZINC COATING
Versione inox:		Stainless steel version:	
Materiale	ACCIAIO INOX AISI304	Material	AISI304
Trattamento	-	Treatment	-



COD.				
B	A	C	Std.	Inox
M4	3,2	7	ANA08/10	ANA08/10I
M6	4	10	ANA12/16	ANA12/16I
M8x1,25	5	13	ANA20	ANA20I
M10x1,25	6	17	ANA25	ANA25I
M10x1,5	6	17	ANA32	ANA32I
M12x1,25	7	19	ANA40B	ANA40BI
M12x1,75	7	19	ANA40	ANA40I
M16x1,25	5	22	ANT12/16	ANT12/16I
M16x1,5	8	24	ANA50B	ANA50BI
M16x2	8	24	ANA5063	ANA5063I
M20x1,5	9	30	ANA80100	ANA80100I
M22x1,5	8	27	ANT20/25	ANT20/25I
M27x2	12	41	ANA125X	ANA125XI
M36x2	14	55	ANA160200X	ANA160200XI



Caratteristiche		Features	
Versione standard:		Standard version:	
Materiale	ACCIAIO CLASSE 04	Material	04 CLASS STEEL
Trattamento	ZINCATURA BIANCA	Treatment	WHITE ZINC COATING
Versione inox:		Stainless steel version:	
Materiale	ACCIAIO INOX AISI304	Material	AISI304
Trattamento	-	Treatment	-