

EASY design
EASY price

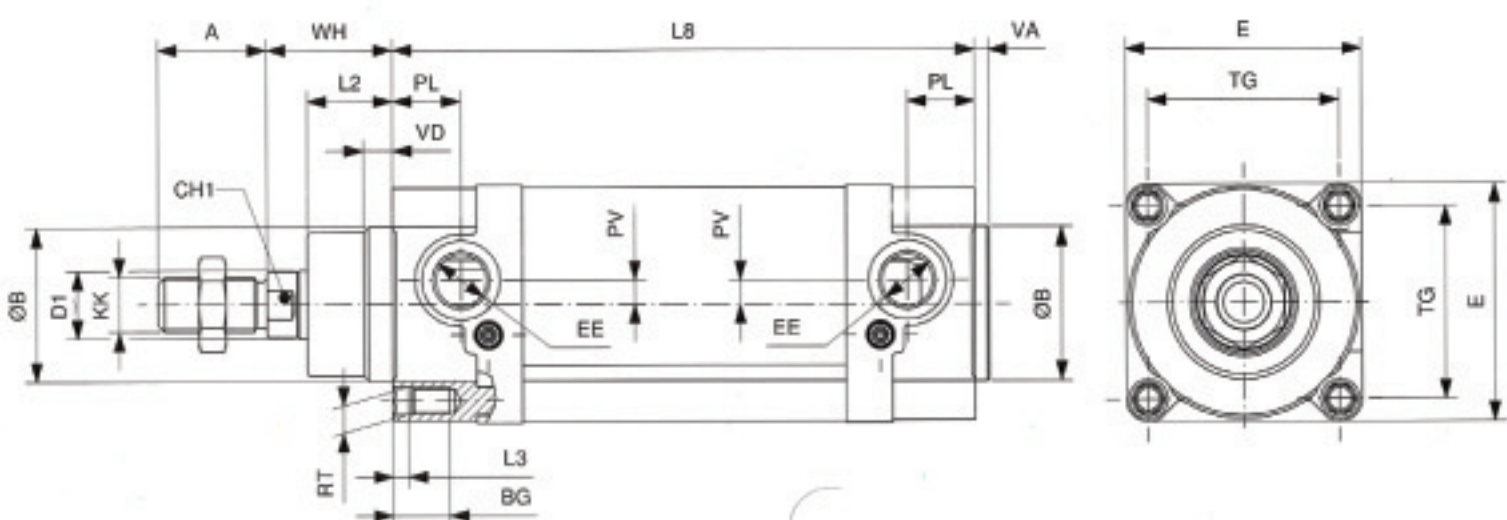


get your

Easy Line

be **EASY**
with
pneumatic
cylinders

EASY LINE
DIN ISO 15552

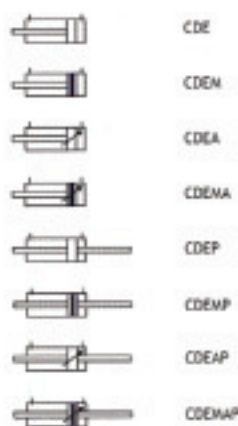


Dimensions
Tabella dimensionale

Ømm	ØD1	KK	A	ØB	VD	VA	L2	RT	BG	L3	TG	EE	PL	PV	WH	L8	E	CHI
32	12	M10X1,25	22	30	8	4	25	M6	16,5	5	32,5	1/8"G	12,5	-	26	94	44	10
40	16	M12X1,25	24	35	12	4	22	M6	16,5	5	38	1/4"G	14	-	30	105	51	13
50	20	M16X1,5	32	40	10,5	4	25,5	M8	16,5	4,5	46,5	1/4"G	14	-	37	106	59,5	17
63	20	M16X1,5	32	45	8,5	4	25	M8	16,5	4,5	56,5	3/8"G	20	7	37	121	69,5	17
80	25	M20X1,5	40	45	10	4	35	M10	17	-	72	3/8"G	18,5	6,5	46	128	87	22
100	25	M20X1,5	40	55	12,5	4	38	M10	17	-	89	1/2"G	20	12	51	138	106,5	22



Available types
Tipologie disponibili



Materials
Materiali costruttivi

Asta : Acciaio Cromato
Piston rod : Chromium coated carbon steel

Tubo : Alluminio anodizzato
Tube : Anodized aluminium

Testate : Alluminio verniciato
Covers : Painted aluminium

Tiranti : Acciaio zincato
Tie rods : Zinc coated steel

Pistone : NBR (monoblocco)
Piston : NBR (integral)

Tenuta stelo : Poliuretano
Rod seal : Polyurethane

Tenute statiche : NBR
Static seals : NBR